

RSK 7114407

The Purus Corner Tile Insert is a super low-level floor drain with a height of just 59mm and a horizontal 50 mm outlet. It is designed for installation in concrete joists. The Purus Corner Tile Insert comes complete with a removable NOOD water trap, strainer, stainless steel clamping ring, stainless steel frame, Tile Insert grate and installation kit. The NOOD water trap is a mechanical trap which closes when there is no water present, thus preventing any foul air from escaping through the drain. This floor drain can be installed in the corner against the wall or elsewhere in the room. For wooden joists with poured concrete, you should use the side or gable outlet versions instead.



Specifications

MPN: 10345. SKU: 7114407. LVI: 3309287. RSK: 7114407

RSK Number	7114407
Dimension	Ø50 mm
Floor Construction	Concrete flooring
Floor Covering	Tiles
Function	Side outlet, low-rise
Item Color	Grey
Material	PP, ABS, Stainless steel 1.4301, Wood
Pressure Flow	0,6 l/s

Temp

Size

374x266x266 mm

Version

With frame and grating

PURUS

RSK 7114407

The Purus Corner Tile Insert is a super low-level floor drain with a height of just 59mm and a horizontal 50 mm outlet. It is designed for installation in concrete joists. The Purus Corner Tile Insert comes complete with a removable NOOD water trap, strainer, stainless steel clamping ring, stainless steel frame, Tile Insert grate and installation kit. The NOOD water trap is a mechanical trap which closes when there is no water present, thus preventing any foul air from escaping through the drain. This floor drain can be installed in the corner against the wall or elsewhere in the room. For wooden joists with poured concrete, you should use the side or gable outlet versions instead.



Specifications

MPN: 10345. SKU: 7114432. LVI: 3309288. RSK: 7114432

RSK Number

7114407

Dimension

Ø50 mm

Floor

Concrete flooring

Construction	
Floor Covering	Tiles
Function	Side outlet, low-rise
Item Color	Grey
Material	PP, ABS, Stainless steel 1.4301, Wood
Pressure Flow Temp	0,6 l/s
Size	374x266x266 mm
Version	With frame and grating

PURUS

RSK 7114407

The Purus Corner Tile Insert is a super low-level floor drain with a height of just 59mm and a horizontal 50 mm outlet. It is designed for installation in concrete joists. The Purus Corner Tile Insert comes complete with a removable NOOD water trap, strainer, stainless steel clamping ring, stainless steel frame, Tile Insert grate and installation kit. The NOOD water trap is a mechanical trap which closes when there is no water present, thus preventing any foul air from escaping through the drain. This floor drain can be installed in the corner against the wall or elsewhere in the room. For wooden joists with poured concrete, you should use the side or gable outlet versions instead.



Specifications

MPN: 10345. SKU: 7114456. GTIN: 07394000215537. LVI: 3309290. RSK: 7114456

RSK Number	7114407
Dimension	Ø50 mm
Floor Construction	Concrete flooring
Floor Covering	Tiles
Function	Side outlet, low-rise
Item Color	Grey
Material	PP, ABS, Stainless steel 1.4301, Wood
Pressure Flow Temp	0,6 l/s
Size	374x266x266 mm
Version	With frame and grating

The logo for PURUS, featuring the word "PURUS" in a bold, blue, sans-serif font.

RSK 7114407 Corner Tile Insert is a super low-level floor drain with a height of just 59mm and a horizontal 50 mm outlet. It is designed for installation in concrete joists. The Purus Corner Tile Insert comes complete with a removable NOOD water trap, strainer, stainless steel clamping ring, stainless steel frame, Tile Insert grate and installation kit. The NOOD water trap is a mechanical trap which closes when there is no water present, thus preventing any foul air from escaping through the drain. This floor drain can be installed in the corner against the wall or elsewhere in the room. For wooden joists with poured concrete, you should use the side or gable outlet versions instead.



Specifications

MPN: 10345. SKU: 7114405. GTIN: 07394025317254. LVI: 3309285. RSK: 7114405

RSK Number	7114407
Dimension	Ø50 mm
Floor Construction	Concrete flooring
Floor Covering	Tiles
Function	Side outlet, low-rise
Item Color	Grey
Material	PP, ABS, Stainless steel 1.4301, Wood
Pressure Flow Temp	0,6 l/s
Size	374x266x266 mm

Version

With frame and grating

PURUS**RSK 7114407**

The Purus Corner Tile Insert is a super low-level floor drain with a height of just 59mm and a horizontal 50 mm outlet. It is designed for installation in concrete joists. The Purus Corner Tile Insert comes complete with a removable NOOD water trap, strainer, stainless steel clamping ring, stainless steel frame, Tile Insert grate and installation kit. The NOOD water trap is a mechanical trap which closes when there is no water present, thus preventing any foul air from escaping through the drain. This floor drain can be installed in the corner against the wall or elsewhere in the room. For wooden joists with poured concrete, you should use the side or gable outlet versions instead.

**Specifications**

MPN: 10345. SKU: 7114406. LVI: 3309286. RSK: 7114406

RSK Number	7114407
Dimension	Ø50 mm
Floor Construction	Concrete flooring
Floor Covering	Tiles

Function	Side outlet, low-rise
Item Color	Grey
Material	PP, ABS, Stainless steel 1.4301, Wood
Pressure Flow Temp	0,6 l/s
Size	374x266x266 mm
Version	With frame and grating

PURUS

RSK 7114407

The Purus Corner Tile Insert is a super low-level floor drain with a height of just 59mm and a horizontal 50 mm outlet. It is designed for installation in concrete joists. The Purus Corner Tile Insert comes complete with a removable NOOD water trap, strainer, stainless steel clamping ring, stainless steel frame, Tile Insert grate and installation kit. The NOOD water trap is a mechanical trap which closes when there is no water present, thus preventing any foul air from escaping through the drain. This floor drain can be installed in the corner against the wall or elsewhere in the room. For wooden joists with poured concrete, you should use the side or gable outlet versions instead.



Specifications

MPN: 10345. SKU: 7114457. LVI: 3309291. RSK: 7114457

RSK Number	7114407
Dimension	Ø50 mm
Floor Construction	Concrete flooring
Floor Covering	Tiles
Function	Side outlet, low-rise
Item Color	Grey
Material	PP, ABS, Stainless steel 1.4301, Wood
Pressure Flow Temp	0,6 l/s
Size	374x266x266 mm
Version	With frame and grating

PURUS



RSK 7114407 Corner Tile Insert is a super low-level floor drain with a height of just 59mm and a horizontal 50 mm outlet. It is designed for installation in concrete joists. The Purus Corner Tile Insert comes complete with a removable NOOD water trap, strainer, stainless steel clamping ring, stainless steel frame, Tile Insert grate and installation kit. The NOOD water trap is a mechanical trap which closes when there is no water present, thus preventing any foul air from escaping through the drain. This floor drain can be installed in the corner against the wall or elsewhere in the room. For wooden joists with poured concrete, you should use the side or gable outlet versions instead.

Specifications

MPN: 10356. SKU: 53442, 53465, 53466. GTIN: 07394000240720, 07394000342967, 07394000342974. LVI: 3311719, 3311718, 3311720. NRF: 3401466, 3401464, 3401465

RSK Number	7114407
Dimension	Ø50 mm
Floor Construction	Concrete flooring
Floor Covering	Tiles
Function	Side outlet, low-rise
Item Color	Grey
Material	PP, ABS, Stainless steel 1.4301, Wood
Pressure Flow Temp	0,6 l/s

Size

374x266x266 mm

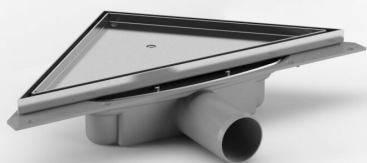
Version

With frame and grating

PURUS

RSK 7114407

The Purus Corner Tile Insert is a super low-level floor drain with a height of just 59mm and a horizontal 50 mm outlet. It is designed for installation in concrete joists. The Purus Corner Tile Insert comes complete with a removable NOOD water trap, strainer, stainless steel clamping ring, stainless steel frame, Tile Insert grate and installation kit. The NOOD water trap is a mechanical trap which closes when there is no water present, thus preventing any foul air from escaping through the drain. This floor drain can be installed in the corner against the wall or elsewhere in the room. For wooden joists with poured concrete, you should use the side or gable outlet versions instead.



Specifications

MPN: 10327. SKU: 7114617, 7114622, 7114627, 7114632, 7114637, 7114675.
GTIN: 07394000216206, 07394000216299, 07394000216381, 07394000216473,
07394000216565, 07394000216657. LVI: 3309211, 3309218, , , 3309235,
3309242. RSK: 7114617, 7114622, 7114627, 7114632, 7114637, 7114675

RSK Number

7114407

Dimension

Ø50 mm

Floor Construction	Concrete flooring
Floor Covering	Tiles
Function	Side outlet, low-rise
Item Color	Grey
Material	PP, ABS, Stainless steel 1.4301, Wood
Pressure Flow Temp	0,6 l/s
Size	374x266x266 mm
Version	With frame and grating

PURUS

RSK 7114407

The Purus Corner Tile Insert is a super low-level floor drain with a height of just 59mm and a horizontal 50 mm outlet. It is designed for installation in concrete joists. The Purus Corner Tile Insert comes complete with a removable NOOD water trap, strainer, stainless steel clamping ring, stainless steel frame, Tile Insert grate and installation kit. The NOOD water trap is a mechanical trap which closes when there is no water present, thus preventing any foul air from escaping through the drain. This floor drain can be installed in the corner against the wall or elsewhere in the room. For wooden joists with poured concrete, you should use the side or gable outlet versions instead.



Specifications

MPN: 13333. SKU: 854372, 854375, 854374, 854373, 854371, 854370, 7114524, 7114514, 7114506, 7114498, 7114490, 7114482. GTIN: 07391543531650, 07391543531681, 07391543531674, 07391543531667, 07391543531643, 07391543531636, 07394000216053, 07394000215971, 07394000215896, 07394000215810, 07394000215735, 07394000215650. LVI: , , , , , 3311738, 3311737, 3311742, 3311741, 3311740, 3311739. RSK: , , , , , 7114524, 7114514, 7114506, 7114498, 7114490, 7114482

RSK Number	7114407
Dimension	Ø50 mm
Floor Construction	Concrete flooring
Floor Covering	Tiles
Function	Side outlet, low-rise
Item Color	Grey
Material	PP, ABS, Stainless steel 1.4301, Wood
Pressure Flow Temp	0,6 l/s
Size	374x266x266 mm
Version	With frame and grating

The logo for PURUS, featuring the word "PURUS" in a bold, blue, sans-serif font.

RSK 7114407 Corner Tile Insert is a super low-level floor drain with a height of just 59mm and a horizontal 50 mm outlet. It is designed for installation in concrete joists. The Purus Corner Tile Insert comes complete with a removable NOOD water trap, strainer, stainless steel clamping ring, stainless steel frame, Tile Insert grate and installation kit. The NOOD water trap is a mechanical trap which closes when there is no water present, thus preventing any foul air from escaping through the drain. This floor drain can be installed in the corner against the wall or elsewhere in the room. For wooden joists with poured concrete, you should use the side or gable outlet versions instead.



Specifications

MPN: 13333. SKU: 854457, 854458, 854459, 854460, 854461, 854462

RSK Number	7114407
Dimension	Ø50 mm
Floor Construction	Concrete flooring
Floor Covering	Tiles
Function	Side outlet, low-rise
Item Color	Grey
Material	PP, ABS, Stainless steel 1.4301, Wood
Pressure Flow Temp	0,6 l/s
Size	374x266x266 mm

Version

With frame and grating

PURUS**RSK 7114407**

The Purus Corner Tile Insert is a super low-level floor drain with a height of just 59mm and a horizontal 50 mm outlet. It is designed for installation in concrete joists. The Purus Corner Tile Insert comes complete with a removable NOOD water trap, strainer, stainless steel clamping ring, stainless steel frame, Tile Insert grate and installation kit. The NOOD water trap is a mechanical trap which closes when there is no water present, thus preventing any foul air from escaping through the drain. This floor drain can be installed in the corner against the wall or elsewhere in the room. For wooden joists with poured concrete, you should use the side or gable outlet versions instead.

**Specifications**

MPN: 13333. SKU: 53363, 53364, 53365, 53366, 53367, 53368. GTIN: 07394000706790, 07394000706806, 07394000706813, 07394000706820, 07394000706837, 07394000706844. LVI: 3311745, 3311746, 3311747, 3311748, 3311743, 3311744. NRF: 3401158, 3401153, 3401154, 3401155, 3401156, 3401157

RSK Number

7114407

Dimension

Ø50 mm

Floor

Concrete flooring

Construction	
Floor Covering	Tiles
Function	Side outlet, low-rise
Item Color	Grey
Material	PP, ABS, Stainless steel 1.4301, Wood
Pressure Flow Temp	0,6 l/s
Size	374x266x266 mm
Version	With frame and grating

PURUS

RSK 7114407

The Purus Corner Tile Insert is a super low-level floor drain with a height of just 59mm and a horizontal 50 mm outlet. It is designed for installation in concrete joists. The Purus Corner Tile Insert comes complete with a removable NOOD water trap, strainer, stainless steel clamping ring, stainless steel frame, Tile Insert grate and installation kit. The NOOD water trap is a mechanical trap which closes when there is no water present, thus preventing any foul air from escaping through the drain. This floor drain can be installed in the corner against the wall or elsewhere in the room. For wooden joists with poured concrete, you should use the side or gable outlet versions instead.



Specifications

MPN: 10335. SKU: 53242, 53241, 53240, 53239, 53238. GTIN: 07394000219863, 07394000219856, 07394000219849, 07394000219832, 07394000219825. LVI: 3311754, 3311757, 3311756, 3311755, 3311692. NRF: 3402056, 3402055, 3402054, 3402053, 3402052

RSK Number	7114407
Dimension	Ø50 mm
Floor Construction	Concrete flooring
Floor Covering	Tiles
Function	Side outlet, low-rise
Item Color	Grey
Material	PP, ABS, Stainless steel 1.4301, Wood
Pressure Flow Temp	0,6 l/s
Size	374x266x266 mm
Version	With frame and grating

The logo for PURUS, featuring the word "PURUS" in a bold, blue, sans-serif font.



RSK 7114407 Corner Tile Insert is a super low-level floor drain with a height of just 59mm and a horizontal 50 mm outlet. It is designed for installation in concrete joists. The Purus Corner Tile Insert comes complete with a removable NOOD water trap, strainer, stainless steel clamping ring, stainless steel frame, Tile Insert grate and installation kit. The NOOD water trap is a mechanical trap which closes when there is no water present, thus preventing any foul air from escaping through the drain. This floor drain can be installed in the corner against the wall or elsewhere in the room. For wooden joists with poured concrete, you should use the side or gable outlet versions instead.

Specifications

MPN: 10332. SKU: 7114609, 7114610, 7114611, 7114612, 7114613, 7114614.
GTIN: 07394000217029, 07394000217036, 07394000217043, 07394000217050,
07394000217067, 07394000217074. LVI: 3309296, 3309305, 3309312, 3309318,
3309326, 3309335. NRF: 3402001, 3402002, 3402003, 3402004, 3402005,
3402006. RSK: 7114609, 7114610, 7114611, 7114612, 7114613, 7114614

RSK Number	7114407
Dimension	Ø50 mm
Floor Construction	Concrete flooring
Floor Covering	Tiles
Function	Side outlet, low-rise
Item Color	Grey
Material	PP, ABS, Stainless steel 1.4301, Wood
Pressure Flow	0,6 l/s

Temp

Size

374x266x266 mm

Version

With frame and grating

PURUS

RSK 7114407

The Purus Corner Tile Insert is a super low-level floor drain with a height of just 59mm and a horizontal 50 mm outlet. It is designed for installation in concrete joists. The Purus Corner Tile Insert comes complete with a removable NOOD water trap, strainer, stainless steel clamping ring, stainless steel frame, Tile Insert grate and installation kit. The NOOD water trap is a mechanical trap which closes when there is no water present, thus preventing any foul air from escaping through the drain. This floor drain can be installed in the corner against the wall or elsewhere in the room. For wooden joists with poured concrete, you should use the side or gable outlet versions instead.



Specifications

MPN: 10342. SKU: 53405, 53406, 53407, 53408, 53409, 53410. GTIN: 07394000210303, 07394000210310, 07394000210327, 07394000210334, 07394000210341, 07394000210365. LVI: 3311760, 3311772, 3311761, 3311773, 3311758, 3311759. NRF: 3401375, 3401374, 3401373, 3401372, 3401371, 3401376

RSK Number

7114407

Dimension	Ø50 mm
Floor Construction	Concrete flooring
Floor Covering	Tiles
Function	Side outlet, low-rise
Item Color	Grey
Material	PP, ABS, Stainless steel 1.4301, Wood
Pressure Flow Temp	0,6 l/s
Size	374x266x266 mm
Version	With frame and grating

PURUS

RSK 7114407

The Purus Corner Tile Insert is a super low-level floor drain with a height of just 59mm and a horizontal 50 mm outlet. It is designed for installation in concrete joists. The Purus Corner Tile Insert comes complete with a removable NOOD water trap, strainer, stainless steel clamping ring, stainless steel frame, Tile Insert grate and installation kit. The NOOD water trap is a mechanical trap which closes when there is no water present, thus preventing any foul air from escaping through the drain. This floor drain can be installed in the corner against the wall or elsewhere in the room. For wooden joists with poured concrete, you



should use the side or gable outlet versions instead.

Specifications

MPN: 17667. SKU: 53450, 53451, 53452, 53453, 53454, 53455. GTIN: 07394000343445, 07394000343452, 07394000343469, 07394000343476, 07394000343483, 07394000343490. LVI: 3311751, 3311752, 3311753, 3311774, 3311749, 3311750. NRF: 3401469, 3401471, 3401472, 3401473, 3401474, 3401475

RSK Number	7114407
Dimension	Ø50 mm
Floor Construction	Concrete flooring
Floor Covering	Tiles
Function	Side outlet, low-rise
Item Color	Grey
Material	PP, ABS, Stainless steel 1.4301, Wood
Pressure Flow Temp	0,6 l/s
Size	374x266x266 mm
Version	With frame and grating

RSK 7114407 Corner Tile Insert is a super low-level floor drain with a height of just 59mm and a horizontal 50 mm outlet. It is designed for installation in concrete joists. The Purus Corner Tile Insert comes complete with a removable NOOD water trap, strainer, stainless steel clamping ring, stainless steel frame, Tile Insert grate and installation kit. The NOOD water trap is a mechanical trap which closes when there is no water present, thus preventing any foul air from escaping through the drain. This floor drain can be installed in the corner against the wall or elsewhere in the room. For wooden joists with poured concrete, you should use the side or gable outlet versions instead.



Specifications

MPN: 10330. SKU: 7114476, 7114484, 7114492, 7114500, 7114508, 7114517.
GTIN: 07394000215599, 07394000215674, 07394000215759, 07394000215834,
07394000215919, 07394000215995. LVI: 3309294, 3309303, 3309203, 3309206,
3309324, 3309333. NRF: 3401925, 3401934, 3401943, 3401952, 3401961,
3401969. RSK: 7114476, 7114484, 7114492, 7114500, 7114508, 7114517

RSK Number	7114407
Dimension	Ø50 mm
Floor Construction	Concrete flooring
Floor Covering	Tiles
Function	Side outlet, low-rise
Item Color	Grey
Material	PP, ABS, Stainless steel 1.4301, Wood
Pressure Flow	0,6 l/s

Temp

Size

374x266x266 mm

Version

With frame and grating

PURUS

RSK 7114407

The Purus Corner Tile Insert is a super low-level floor drain with a height of just 59mm and a horizontal 50 mm outlet. It is designed for installation in concrete joists. The Purus Corner Tile Insert comes complete with a removable NOOD water trap, strainer, stainless steel clamping ring, stainless steel frame, Tile Insert grate and installation kit. The NOOD water trap is a mechanical trap which closes when there is no water present, thus preventing any foul air from escaping through the drain. This floor drain can be installed in the corner against the wall or elsewhere in the room. For wooden joists with poured concrete, you should use the side or gable outlet versions instead.



Specifications

MPN: 10331. SKU: 7114477, 7114485, 7114493, 7114501, 7114509, 7114518.
GTIN: 07394000215605, 07394000215681, 07394000215766, 07394000215841,
07394000215926, 07394000216008. LVI: 3309295, 3309304, 3309204, 3309207,
3309325, 3309334. NRF: 3401926, 3401935, 3401944, 3401953, 3401962,
3401971. RSK: 7114477, 7114485, 7114493, 7114501, 7114509, 7114518

RSK Number

7114407

Dimension	Ø50 mm
Floor Construction	Concrete flooring
Floor Covering	Tiles
Function	Side outlet, low-rise
Item Color	Grey
Material	PP, ABS, Stainless steel 1.4301, Wood
Pressure Flow Temp	0,6 l/s
Size	374x266x266 mm
Version	With frame and grating

PURUS

RSK 7114407

The Purus Corner Tile Insert is a super low-level floor drain with a height of just 59mm and a horizontal 50 mm outlet. It is designed for installation in concrete joists. The Purus Corner Tile Insert comes complete with a removable NOOD water trap, strainer, stainless steel clamping ring, stainless steel frame, Tile Insert grate and installation kit. The NOOD water trap is a mechanical trap which closes when there is no water present, thus preventing any foul air from escaping through the drain. This floor drain can be installed in the corner against the wall or elsewhere in the room. For wooden joists with poured concrete, you



should use the side or gable outlet versions instead.

Specifications

MPN: 10341. SKU: 53375, 53376, 53377, 53378, 53379, 53380. GTIN: 07394000240942, 07394000240959, 07394000240966, 07394000240973, 07394000240980, 07394000240997. LVI: 3311767, 3311768, 3311769, 3311770, 3311765, 3311766. NRF: 3401364, 3401365, 3401366, 3401367, 3401368, 3401369

RSK Number	7114407
Dimension	Ø50 mm
Floor Construction	Concrete flooring
Floor Covering	Tiles
Function	Side outlet, low-rise
Item Color	Grey
Material	PP, ABS, Stainless steel 1.4301, Wood
Pressure Flow Temp	0,6 l/s
Size	374x266x266 mm
Version	With frame and grating

RSK 7114407 Corner Tile Insert is a super low-level floor drain with a height of just 59mm and a horizontal 50 mm outlet. It is designed for installation in concrete joists. The Purus Corner Tile Insert comes complete with a removable NOOD water trap, strainer, stainless steel clamping ring, stainless steel frame, Tile Insert grate and installation kit. The NOOD water trap is a mechanical trap which closes when there is no water present, thus preventing any foul air from escaping through the drain. This floor drain can be installed in the corner against the wall or elsewhere in the room. For wooden joists with poured concrete, you should use the side or gable outlet versions instead.



Specifications

MPN: 10327. SKU: 7114658, 7114660, 7114662, 7114664, 7114666, 7114674.
GTIN: 07394000216190, 07394000216282, 07394000216374, 07394000216466,
07394000216558, 07394000216640. LVI: 3309215, 3309222, 3309227, 3309232,
3309239, 3309246. RSK: 7114658, 7114660, 7114662, 7114664, 7114666,
7114674

RSK Number	7114407
Dimension	Ø50 mm
Floor Construction	Concrete flooring
Floor Covering	Tiles
Function	Side outlet, low-rise
Item Color	Grey
Material	PP, ABS, Stainless steel 1.4301, Wood
Pressure Flow	0,6 l/s

Temp

Size

374x266x266 mm

Version

With frame and grating

PURUS

RSK 7114407

The Purus Corner Tile Insert is a super low-level floor drain with a height of just 59mm and a horizontal 50 mm outlet. It is designed for installation in concrete joists. The Purus Corner Tile Insert comes complete with a removable NOOD water trap, strainer, stainless steel clamping ring, stainless steel frame, Tile Insert grate and installation kit. The NOOD water trap is a mechanical trap which closes when there is no water present, thus preventing any foul air from escaping through the drain. This floor drain can be installed in the corner against the wall or elsewhere in the room. For wooden joists with poured concrete, you should use the side or gable outlet versions instead.



Specifications

MPN: 10327. SKU: 7114616, 7114621, 7114626, 7114631, 7114636, 7114670.
GTIN: 07394000216152, 07394000216244, 07394000216336, 07394000216428,
07394000216510, 07394000216602. LVI: 3309210, 3309217, 3309223, 3309228,
3309234, 3309241. RSK: 7114616, 7114621, 7114626, 7114631, 7114636,
7114670

RSK Number

7114407

Dimension	Ø50 mm
Floor Construction	Concrete flooring
Floor Covering	Tiles
Function	Side outlet, low-rise
Item Color	Grey
Material	PP, ABS, Stainless steel 1.4301, Wood
Pressure Flow Temp	0,6 l/s
Size	374x266x266 mm
Version	With frame and grating

PURUS

RSK 7114407

The Purus Corner Tile Insert is a super low-level floor drain with a height of just 59mm and a horizontal 50 mm outlet. It is designed for installation in concrete joists. The Purus Corner Tile Insert comes complete with a removable NOOD water trap, strainer, stainless steel clamping ring, stainless steel frame, Tile Insert grate and installation kit. The NOOD water trap is a mechanical trap which closes when there is no water present, thus preventing any foul air from escaping through the drain. This floor drain can be installed in the corner against the wall or elsewhere in the room. For wooden joists with poured concrete, you



should use the side or gable outlet versions instead.

Specifications

MPN: 10327. SKU: 7114645, 7114647, 7114649, 7114651, 7114653, 7114671.
GTIN: 07394000216169, 07394000216251, 07394000216343, 07394000216435,
07394000216527, 07394000216619. LVI: 3309212, 3309219, 3309224, 3309229,
3309236, 3309243. RSK: 7114645, 7114647, 7114649, 7114651, 7114653,
7114671

RSK Number	7114407
Dimension	Ø50 mm
Floor Construction	Concrete flooring
Floor Covering	Tiles
Function	Side outlet, low-rise
Item Color	Grey
Material	PP, ABS, Stainless steel 1.4301, Wood
Pressure Flow Temp	0,6 l/s
Size	374x266x266 mm
Version	With frame and grating



RSK 7114407 Corner Tile Insert is a super low-level floor drain with a height of just 59mm and a horizontal 50 mm outlet. It is designed for installation in concrete joists. The Purus Corner Tile Insert comes complete with a removable NOOD water trap, strainer, stainless steel clamping ring, stainless steel frame, Tile Insert grate and installation kit. The NOOD water trap is a mechanical trap which closes when there is no water present, thus preventing any foul air from escaping through the drain. This floor drain can be installed in the corner against the wall or elsewhere in the room. For wooden joists with poured concrete, you should use the side or gable outlet versions instead.

Specifications

MPN: 10327. SKU: 7114657, 7114659, 7114661, 7114663, 7114665, 7114673.
GTIN: 07394000216183, 07394000216275, 07394000216367, 07394000216459,
07394000216541, 07394000216633. LVI: 3309214, 3309221, 3309226, 3309231,
3309238, 3309245. RSK: 7114657, 7114659, 7114661, 7114663, 7114665,
7114673

RSK Number	7114407
Dimension	Ø50 mm
Floor Construction	Concrete flooring
Floor Covering	Tiles
Function	Side outlet, low-rise
Item Color	Grey
Material	PP, ABS, Stainless steel 1.4301, Wood
Pressure Flow	0,6 l/s

Temp

Size

374x266x266 mm

Version

With frame and grating

PURUS

RSK 7114407

The Purus Corner Tile Insert is a super low-level floor drain with a height of just 59mm and a horizontal 50 mm outlet. It is designed for installation in concrete joists. The Purus Corner Tile Insert comes complete with a removable NOOD water trap, strainer, stainless steel clamping ring, stainless steel frame, Tile Insert grate and installation kit. The NOOD water trap is a mechanical trap which closes when there is no water present, thus preventing any foul air from escaping through the drain. This floor drain can be installed in the corner against the wall or elsewhere in the room. For wooden joists with poured concrete, you should use the side or gable outlet versions instead.



Specifications

MPN: 10327. SKU: 7114615, 7114620, 7114625, 7114630, 7114635, 7114669.
GTIN: 07394000216145, 07394000216237, 07394000216329, 07394000216411,
07394000216503, 07394000216596. LVI: 3309209, 3309216, , , 3309233,
3309240. RSK: 7114615, 7114620, 7114625, 7114630, 7114635, 7114669

RSK Number

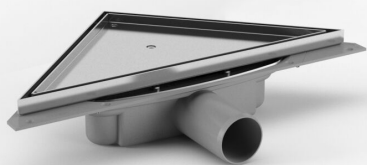
7114407

Dimension	Ø50 mm
Floor Construction	Concrete flooring
Floor Covering	Tiles
Function	Side outlet, low-rise
Item Color	Grey
Material	PP, ABS, Stainless steel 1.4301, Wood
Pressure Flow Temp	0,6 l/s
Size	374x266x266 mm
Version	With frame and grating

PURUS

RSK 7114407

The Purus Corner Tile Insert is a super low-level floor drain with a height of just 59mm and a horizontal 50 mm outlet. It is designed for installation in concrete joists. The Purus Corner Tile Insert comes complete with a removable NOOD water trap, strainer, stainless steel clamping ring, stainless steel frame, Tile Insert grate and installation kit. The NOOD water trap is a mechanical trap which closes when there is no water present, thus preventing any foul air from escaping through the drain. This floor drain can be installed in the corner against the wall or elsewhere in the room. For wooden joists with poured concrete, you



should use the side or gable outlet versions instead.

Specifications

MPN: 10338. SKU: 53244, 53245, 53246, 53247, 53248. GTIN: 07394000219887, 07394000219894, 07394000219900, 07394000219917, 07394000219924. LVI: 3311763, 3311764, 3312606, 3312607, 3311762. NRF: 3402068, 3402069, 3402071, 3402072, 3402073

RSK Number	7114407
Dimension	Ø50 mm
Floor Construction	Concrete flooring
Floor Covering	Tiles
Function	Side outlet, low-rise
Item Color	Grey
Material	PP, ABS, Stainless steel 1.4301, Wood
Pressure Flow Temp	0,6 l/s
Size	374x266x266 mm
Version	With frame and grating