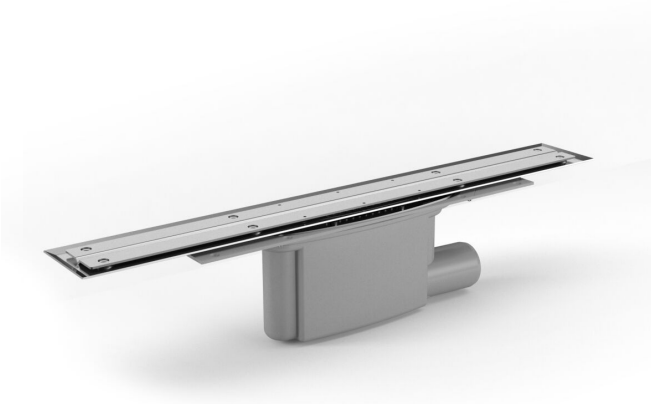


RSK 7110546



The Purus Line Premium 600 is a complete linear floor drain with a gable 50 mm outlet. It is designed for installation in wooden or concrete joists. The Purus Line Premium comes complete with a removable NOOD water trap, strainer, stainless steel clamping ring, installation kit, stainless steel frame and the Premium frame which tiles are fixed on to. The NOOD water trap is a mechanical trap which closes when there is no water present, thus preventing any foul air from escaping through the drain. This linear floor drain can be installed against the wall or elsewhere in the room.

RSK 7110552

The Purus Line Premium 700 is a complete linear floor drain with a gable 50 mm outlet. It is designed for installation in wooden or concrete joists. The Purus Line Premium comes complete with a removable NOOD water trap, strainer, stainless steel clamping ring, installation kit, stainless steel frame and the Premium frame which tiles are fixed on to. The NOOD water trap is a mechanical trap which closes when there is no water present, thus preventing any foul air from escaping through the drain. This linear floor drain can be installed against the wall or elsewhere in the room.

RSK 7110558

The Purus Line Premium 800 is a complete linear floor drain with a gable 50 mm outlet. It is designed for installation in wooden or concrete joists. The Purus Line Premium comes complete with a removable NOOD

water trap, strainer, stainless steel clamping ring, installation kit, stainless steel frame and the Premium frame which tiles are fixed on to. The NOOD water trap is a mechanical trap which closes when there is no water present, thus preventing any foul air from escaping through the drain. This linear floor drain can be installed against the wall or elsewhere in the room.

RSK 7110564

The Purus Line Premium 900 is a complete linear floor drain with a gable 50 mm outlet. It is designed for installation in wooden or concrete joists. The Purus Line Premium comes complete with a removable NOOD water trap, strainer, stainless steel clamping ring, installation kit, stainless steel frame and the Premium frame which tiles are fixed on to. The NOOD water trap is a mechanical trap which closes when there is no water present, thus preventing any foul air from escaping through the drain. This linear floor drain can be installed against the wall or elsewhere in the room.

RSK 7110570

The Purus Line Premium 1000 is a complete linear floor drain with a gable 50 mm outlet. It is designed for installation in wooden or concrete joists. The Purus Line Premium comes complete with a removable NOOD water trap, strainer, stainless steel clamping ring, installation kit, stainless steel frame and the Premium frame which tiles are fixed on to. The NOOD water trap is a mechanical trap which closes when there is no water present, thus preventing any foul air from escaping through the drain. This linear floor drain can be installed against the wall or elsewhere in the room.

RSK 7110576

The Purus Line Premium 1200 is a complete linear floor drain with a gable 50 mm outlet. It is designed for installation in wooden or concrete joists. The Purus Line Premium comes complete with a removable NOOD water trap, strainer, stainless steel clamping ring, installation kit, stainless steel frame and the Premium frame which tiles are fixed on to. The NOOD water trap is a mechanical trap which closes when there is no water present, thus preventing any foul air from escaping through the drain. This linear floor drain can be installed against the wall or elsewhere in the room.

Specifications

MPN: 7012. SKU: 7110546, 7110552, 7110558, 7110564, 7110570, 7110576. GTIN: 07394000209901, 07394000209970, 07394000250040, 07394000250217, 07394000250286, 07394000250354. RSK: 7110546, 7110552, 7110558, 7110564, 7110570, 7110576

RSK Number	7110546
Dimension	Ø50 mm
Floor Construction	Concrete/Wood
Floor Covering	Tiles
Function	End outlet
Item Color	Grey
Material	PP, ABS, Wood, Stainless steel 1.4301
Pressure Flow	0,8 l/s

Temp	
Size	600
Version	With frame and Premium rail
RSK Number	7110552
Dimension	Ø50 mm
Floor Construction	Concrete/Wood
Floor Covering	Tiles
Function	End outlet
Item Color	Grey
Material	PP, ABS, Wood, Stainless steel 1.4301
Pressure Flow Temp	0,8 l/s
Size	700
Version	With frame and Premium rail
RSK Number	7110558
Dimension	Ø50 mm
Floor Construction	Concrete/Wood
Floor Covering	Tiles
Function	End outlet

Item Color	Grey
Material	PP, ABS, Wood, Stainless steel 1.4301
Pressure Flow Temp	0,8 l/s
Size	800
Version	With frame and Premium rail
RSK Number	7110564
Dimension	Ø50 mm
Floor Construction	Concrete/Wood
Floor Covering	Tiles
Function	End outlet
Item Color	Grey
Material	PP, ABS, Wood, Stainless steel 1.4301
Pressure Flow Temp	0,8 l/s
Size	900
Version	With frame and Premium rail
RSK Number	7110570
Dimension	Ø50 mm
Floor Construction	Concrete/Wood

Floor Covering	Tiles
Function	End outlet
Item Color	Grey
Material	PP, ABS, Wood, Stainless steel 1.4301
Pressure Flow Temp	0,8 l/s
Size	1000
Version	With frame and Premium rail

RSK Number	7110576
Dimension	Ø50 mm
Floor Construction	Concrete/Wood

Floor Covering	Tiles
Function	End outlet
Item Color	Grey
Material	PP, ABS, Wood, Stainless steel 1.4301
Pressure Flow Temp	0,8 l/s
Size	1200
Version	With frame and Premium rail

RSK 7110546



The Purus Line Premium 600 is a complete linear floor drain with a gable 50 mm outlet. It is designed for installation in wooden or concrete joists. The Purus Line Premium comes complete with a removable NOOD water trap, strainer, stainless steel clamping ring, installation kit, stainless steel frame and the Premium frame which tiles are fixed on to. The NOOD water trap is a mechanical trap which closes when there is no water present, thus preventing any foul air from escaping through the drain. This linear floor drain can be installed against the wall or elsewhere in the room.

RSK 7110552

The Purus Line Premium 700 is a complete linear floor drain with a gable 50 mm outlet. It is designed for installation in wooden or concrete joists. The Purus Line Premium comes complete with a removable NOOD water trap, strainer, stainless steel clamping ring, installation kit, stainless steel frame and the Premium frame which tiles are fixed on to. The NOOD water trap is a mechanical trap which closes when there is no water present, thus preventing any foul air from escaping through the drain. This linear floor drain can be installed against the wall or elsewhere in the room.

RSK 7110558

The Purus Line Premium 800 is a complete linear floor drain with a gable 50 mm outlet. It is designed for installation in wooden or

concrete joists. The Purus Line Premium comes complete with a removable NOOD water trap, strainer, stainless steel clamping ring, installation kit, stainless steel frame and the Premium frame which tiles are fixed on to. The NOOD water trap is a mechanical trap which closes when there is no water present, thus preventing any foul air from escaping through the drain. This linear floor drain can be installed against the wall or elsewhere in the room.

RSK 7110564

The Purus Line Premium 900 is a complete linear floor drain with a gable 50 mm outlet. It is designed for installation in wooden or concrete joists. The Purus Line Premium comes complete with a removable NOOD water trap, strainer, stainless steel clamping ring, installation kit, stainless steel frame and the Premium frame which tiles are fixed on to. The NOOD water trap is a mechanical trap which closes when there is no water present, thus preventing any foul air from escaping through the drain. This linear floor drain can be installed against the wall or elsewhere in the room.

RSK 7110570

The Purus Line Premium 1000 is a complete linear floor drain with a gable 50 mm outlet. It is designed for installation in wooden or concrete joists. The Purus Line Premium comes complete with a removable NOOD water trap, strainer, stainless steel clamping ring, installation kit, stainless steel frame and the Premium frame which tiles are fixed on to. The NOOD water trap is a mechanical trap which closes when there is no water present, thus preventing any foul air from escaping through the drain. This linear floor drain can be installed

against the wall or elsewhere in the room.

RSK 7110576

The Purus Line Premium 1200 is a complete linear floor drain with a gable 50 mm outlet. It is designed for installation in wooden or concrete joists. The Purus Line Premium comes complete with a removable NOOD water trap, strainer, stainless steel clamping ring, installation kit, stainless steel frame and the Premium frame which tiles are fixed on to. The NOOD water trap is a mechanical trap which closes when there is no water present, thus preventing any foul air from escaping through the drain. This linear floor drain can be installed against the wall or elsewhere in the room.

Specifications

MPN: 7012. SKU: 7110542, 7110548, 7110554, 7110560, 7110566, 7110572. GTIN: 07394000209857, 07394000209925, 07394000209994, 07394000250064, 07394000250231, 07394000250309. RSK: 7110542, 7110548, 7110554, 7110560, 7110566, 7110572

RSK Number	7110546
Dimension	Ø50 mm
Floor Construction	Concrete/Wood
Floor Covering	Tiles
Function	End outlet
Item Color	Grey
Material	PP, ABS, Wood, Stainless steel 1.4301

Pressure Flow Temp	0,8 l/s
Size	600
Version	With frame and Premium rail
RSK Number	7110552
Dimension	Ø50 mm
Floor Construction	Concrete/Wood
Floor Covering	Tiles
Function	End outlet
Item Color	Grey
Material	PP, ABS, Wood, Stainless steel 1.4301
Pressure Flow Temp	0,8 l/s
Size	700
Version	With frame and Premium rail
RSK Number	7110558
Dimension	Ø50 mm
Floor Construction	Concrete/Wood
Floor Covering	Tiles
Function	End outlet

Item Color	Grey
Material	PP, ABS, Wood, Stainless steel 1.4301
Pressure Flow Temp	0,8 l/s
Size	800
Version	With frame and Premium rail
RSK Number	7110564
Dimension	Ø50 mm
Floor Construction	Concrete/Wood
Floor Covering	Tiles
Function	End outlet
Item Color	Grey
Material	PP, ABS, Wood, Stainless steel 1.4301
Pressure Flow Temp	0,8 l/s
Size	900
Version	With frame and Premium rail
RSK Number	7110570
Dimension	Ø50 mm
Floor Construction	Concrete/Wood

Floor Covering	Tiles
Function	End outlet
Item Color	Grey
Material	PP, ABS, Wood, Stainless steel 1.4301
Pressure Flow Temp	0,8 l/s
Size	1000
Version	With frame and Premium rail

RSK Number	7110576
Dimension	Ø50 mm
Floor Construction	Concrete/Wood

Floor Covering	Tiles
Function	End outlet
Item Color	Grey
Material	PP, ABS, Wood, Stainless steel 1.4301
Pressure Flow Temp	0,8 l/s
Size	1200
Version	With frame and Premium rail

RSK 7110546



The Purus Line Premium 600 is a complete linear floor drain with a gable 50 mm outlet. It is designed for installation in wooden or concrete joists. The Purus Line Premium comes complete with a removable NOOD water trap, strainer, stainless steel clamping ring, installation kit, stainless steel frame and the Premium frame which tiles are fixed on to. The NOOD water trap is a mechanical trap which closes when there is no water present, thus preventing any foul air from escaping through the drain. This linear floor drain can be installed against the wall or elsewhere in the room.

RSK 7110552

The Purus Line Premium 700 is a complete linear floor drain with a gable 50 mm outlet. It is designed for installation in wooden or concrete joists. The Purus Line Premium comes complete with a removable NOOD water trap, strainer, stainless steel clamping ring, installation kit, stainless steel frame and the Premium frame which tiles are fixed on to. The NOOD water trap is a mechanical trap which closes when there is no water present, thus preventing any foul air from escaping through the drain. This linear floor drain can be installed against the wall or elsewhere in the room.

RSK 7110558

The Purus Line Premium 800 is a complete linear floor drain with a gable 50 mm outlet. It is designed for installation in wooden or

concrete joists. The Purus Line Premium comes complete with a removable NOOD water trap, strainer, stainless steel clamping ring, installation kit, stainless steel frame and the Premium frame which tiles are fixed on to. The NOOD water trap is a mechanical trap which closes when there is no water present, thus preventing any foul air from escaping through the drain. This linear floor drain can be installed against the wall or elsewhere in the room.

RSK 7110564

The Purus Line Premium 900 is a complete linear floor drain with a gable 50 mm outlet. It is designed for installation in wooden or concrete joists. The Purus Line Premium comes complete with a removable NOOD water trap, strainer, stainless steel clamping ring, installation kit, stainless steel frame and the Premium frame which tiles are fixed on to. The NOOD water trap is a mechanical trap which closes when there is no water present, thus preventing any foul air from escaping through the drain. This linear floor drain can be installed against the wall or elsewhere in the room.

RSK 7110570

The Purus Line Premium 1000 is a complete linear floor drain with a gable 50 mm outlet. It is designed for installation in wooden or concrete joists. The Purus Line Premium comes complete with a removable NOOD water trap, strainer, stainless steel clamping ring, installation kit, stainless steel frame and the Premium frame which tiles are fixed on to. The NOOD water trap is a mechanical trap which closes when there is no water present, thus preventing any foul air from escaping through the drain. This linear floor drain can be installed

against the wall or elsewhere in the room.

RSK 7110576

The Purus Line Premium 1200 is a complete linear floor drain with a gable 50 mm outlet. It is designed for installation in wooden or concrete joists. The Purus Line Premium comes complete with a removable NOOD water trap, strainer, stainless steel clamping ring, installation kit, stainless steel frame and the Premium frame which tiles are fixed on to. The NOOD water trap is a mechanical trap which closes when there is no water present, thus preventing any foul air from escaping through the drain. This linear floor drain can be installed against the wall or elsewhere in the room.

Specifications

MPN: 7012. SKU: 7110543, 7110549, 7110555, 7110561, 7110567, 7110573. GTIN: 07394000209864, 07394000209932, 07394000250002, 07394000250071, 07394000250248, 07394000250316. RSK: 7110543, 7110549, 7110555, 7110561, 7110567, 7110573

RSK Number	7110546
Dimension	Ø50 mm
Floor Construction	Concrete/Wood
Floor Covering	Tiles
Function	End outlet
Item Color	Grey
Material	PP, ABS, Wood, Stainless steel 1.4301

Pressure Flow Temp	0,8 l/s
Size	600
Version	With frame and Premium rail
RSK Number	7110552
Dimension	Ø50 mm
Floor Construction	Concrete/Wood
Floor Covering	Tiles
Function	End outlet
Item Color	Grey
Material	PP, ABS, Wood, Stainless steel 1.4301
Pressure Flow Temp	0,8 l/s
Size	700
Version	With frame and Premium rail
RSK Number	7110558
Dimension	Ø50 mm
Floor Construction	Concrete/Wood
Floor Covering	Tiles
Function	End outlet

Item Color	Grey
Material	PP, ABS, Wood, Stainless steel 1.4301
Pressure Flow Temp	0,8 l/s
Size	800
Version	With frame and Premium rail
RSK Number	7110564
Dimension	Ø50 mm
Floor Construction	Concrete/Wood
Floor Covering	Tiles
Function	End outlet
Item Color	Grey
Material	PP, ABS, Wood, Stainless steel 1.4301
Pressure Flow Temp	0,8 l/s
Size	900
Version	With frame and Premium rail
RSK Number	7110570
Dimension	Ø50 mm
Floor Construction	Concrete/Wood

Floor Covering	Tiles
Function	End outlet
Item Color	Grey
Material	PP, ABS, Wood, Stainless steel 1.4301
Pressure Flow Temp	0,8 l/s
Size	1000
Version	With frame and Premium rail

RSK Number	7110576
Dimension	Ø50 mm
Floor Construction	Concrete/Wood

Floor Covering	Tiles
Function	End outlet
Item Color	Grey
Material	PP, ABS, Wood, Stainless steel 1.4301
Pressure Flow Temp	0,8 l/s
Size	1200
Version	With frame and Premium rail

RSK 7110546



The Purus Line Premium 600 is a complete linear floor drain with a gable 50 mm outlet. It is designed for installation in wooden or concrete joists. The Purus Line Premium comes complete with a removable NOOD water trap, strainer, stainless steel clamping ring, installation kit, stainless steel frame and the Premium frame which tiles are fixed on to. The NOOD water trap is a mechanical trap which closes when there is no water present, thus preventing any foul air from escaping through the drain. This linear floor drain can be installed against the wall or elsewhere in the room.

RSK 7110552

The Purus Line Premium 700 is a complete linear floor drain with a gable 50 mm outlet. It is designed for installation in wooden or concrete joists. The Purus Line Premium comes complete with a removable NOOD water trap, strainer, stainless steel clamping ring, installation kit, stainless steel frame and the Premium frame which tiles are fixed on to. The NOOD water trap is a mechanical trap which closes when there is no water present, thus preventing any foul air from escaping through the drain. This linear floor drain can be installed against the wall or elsewhere in the room.

RSK 7110558

The Purus Line Premium 800 is a complete linear floor drain with a gable 50 mm outlet. It is designed for installation in wooden or

concrete joists. The Purus Line Premium comes complete with a removable NOOD water trap, strainer, stainless steel clamping ring, installation kit, stainless steel frame and the Premium frame which tiles are fixed on to. The NOOD water trap is a mechanical trap which closes when there is no water present, thus preventing any foul air from escaping through the drain. This linear floor drain can be installed against the wall or elsewhere in the room.

RSK 7110564

The Purus Line Premium 900 is a complete linear floor drain with a gable 50 mm outlet. It is designed for installation in wooden or concrete joists. The Purus Line Premium comes complete with a removable NOOD water trap, strainer, stainless steel clamping ring, installation kit, stainless steel frame and the Premium frame which tiles are fixed on to. The NOOD water trap is a mechanical trap which closes when there is no water present, thus preventing any foul air from escaping through the drain. This linear floor drain can be installed against the wall or elsewhere in the room.

RSK 7110570

The Purus Line Premium 1000 is a complete linear floor drain with a gable 50 mm outlet. It is designed for installation in wooden or concrete joists. The Purus Line Premium comes complete with a removable NOOD water trap, strainer, stainless steel clamping ring, installation kit, stainless steel frame and the Premium frame which tiles are fixed on to. The NOOD water trap is a mechanical trap which closes when there is no water present, thus preventing any foul air from escaping through the drain. This linear floor drain can be installed

against the wall or elsewhere in the room.

RSK 7110576

The Purus Line Premium 1200 is a complete linear floor drain with a gable 50 mm outlet. It is designed for installation in wooden or concrete joists. The Purus Line Premium comes complete with a removable NOOD water trap, strainer, stainless steel clamping ring, installation kit, stainless steel frame and the Premium frame which tiles are fixed on to. The NOOD water trap is a mechanical trap which closes when there is no water present, thus preventing any foul air from escaping through the drain. This linear floor drain can be installed against the wall or elsewhere in the room.

Specifications

MPN: 7012. SKU: 7103572, 7103573, 7103574, 7103575, 7103576, 7103577. GTIN: 07394000209888, 07394000209956, 07394000250026, 07394000250194, 07394000250262, 07394000250330. RSK: 7103572, 7103573, 7103574, 7103575, 7103576, 7103577

RSK Number	7110546
Dimension	Ø50 mm
Floor Construction	Concrete/Wood
Floor Covering	Tiles
Function	End outlet
Item Color	Grey
Material	PP, ABS, Wood, Stainless steel 1.4301

Pressure Flow Temp	0,8 l/s
Size	600
Version	With frame and Premium rail
RSK Number	7110552
Dimension	Ø50 mm
Floor Construction	Concrete/Wood
Floor Covering	Tiles
Function	End outlet
Item Color	Grey
Material	PP, ABS, Wood, Stainless steel 1.4301
Pressure Flow Temp	0,8 l/s
Size	700
Version	With frame and Premium rail
RSK Number	7110558
Dimension	Ø50 mm
Floor Construction	Concrete/Wood
Floor Covering	Tiles
Function	End outlet

Item Color	Grey
Material	PP, ABS, Wood, Stainless steel 1.4301
Pressure Flow Temp	0,8 l/s
Size	800
Version	With frame and Premium rail
RSK Number	7110564
Dimension	Ø50 mm
Floor Construction	Concrete/Wood
Floor Covering	Tiles
Function	End outlet
Item Color	Grey
Material	PP, ABS, Wood, Stainless steel 1.4301
Pressure Flow Temp	0,8 l/s
Size	900
Version	With frame and Premium rail
RSK Number	7110570
Dimension	Ø50 mm
Floor Construction	Concrete/Wood

Floor Covering	Tiles
Function	End outlet
Item Color	Grey
Material	PP, ABS, Wood, Stainless steel 1.4301
Pressure Flow Temp	0,8 l/s
Size	1000
Version	With frame and Premium rail
RSK Number	7110576
Dimension	Ø50 mm
Floor Construction	Concrete/Wood
Floor Covering	Tiles
Function	End outlet
Item Color	Grey
Material	PP, ABS, Wood, Stainless steel 1.4301
Pressure Flow Temp	0,8 l/s
Size	1200
Version	With frame and Premium rail

RSK 7110546



The Purus Line Premium 600 is a complete linear floor drain with a gable 50 mm outlet. It is designed for installation in wooden or concrete joists. The Purus Line Premium comes complete with a removable NOOD water trap, strainer, stainless steel clamping ring, installation kit, stainless steel frame and the Premium frame which tiles are fixed on to. The NOOD water trap is a mechanical trap which closes when there is no water present, thus preventing any foul air from escaping through the drain. This linear floor drain can be installed against the wall or elsewhere in the room.

RSK 7110552

The Purus Line Premium 700 is a complete linear floor drain with a gable 50 mm outlet. It is designed for installation in wooden or concrete joists. The Purus Line Premium comes complete with a removable NOOD water trap, strainer, stainless steel clamping ring, installation kit, stainless steel frame and the Premium frame which tiles are fixed on to. The NOOD water trap is a mechanical trap which closes when there is no water present, thus preventing any foul air from escaping through the drain. This linear floor drain can be installed against the wall or elsewhere in the room.

RSK 7110558

The Purus Line Premium 800 is a complete linear floor drain with a gable 50 mm outlet. It is designed for installation in wooden or

concrete joists. The Purus Line Premium comes complete with a removable NOOD water trap, strainer, stainless steel clamping ring, installation kit, stainless steel frame and the Premium frame which tiles are fixed on to. The NOOD water trap is a mechanical trap which closes when there is no water present, thus preventing any foul air from escaping through the drain. This linear floor drain can be installed against the wall or elsewhere in the room.

RSK 7110564

The Purus Line Premium 900 is a complete linear floor drain with a gable 50 mm outlet. It is designed for installation in wooden or concrete joists. The Purus Line Premium comes complete with a removable NOOD water trap, strainer, stainless steel clamping ring, installation kit, stainless steel frame and the Premium frame which tiles are fixed on to. The NOOD water trap is a mechanical trap which closes when there is no water present, thus preventing any foul air from escaping through the drain. This linear floor drain can be installed against the wall or elsewhere in the room.

RSK 7110570

The Purus Line Premium 1000 is a complete linear floor drain with a gable 50 mm outlet. It is designed for installation in wooden or concrete joists. The Purus Line Premium comes complete with a removable NOOD water trap, strainer, stainless steel clamping ring, installation kit, stainless steel frame and the Premium frame which tiles are fixed on to. The NOOD water trap is a mechanical trap which closes when there is no water present, thus preventing any foul air from escaping through the drain. This linear floor drain can be installed

against the wall or elsewhere in the room.

RSK 7110576

The Purus Line Premium 1200 is a complete linear floor drain with a gable 50 mm outlet. It is designed for installation in wooden or concrete joists. The Purus Line Premium comes complete with a removable NOOD water trap, strainer, stainless steel clamping ring, installation kit, stainless steel frame and the Premium frame which tiles are fixed on to. The NOOD water trap is a mechanical trap which closes when there is no water present, thus preventing any foul air from escaping through the drain. This linear floor drain can be installed against the wall or elsewhere in the room.

Specifications

MPN: 7012. SKU: 7110545, 7110551, 7110557, 7110563, 7110569, 7110575. GTIN: 07394000209895, 07394000209963, 07394000250033, 07394000250200, 07394000250279, 07394000250347. RSK: 7110545, 7110551, 7110557, 7110563, 7110569, 7110575

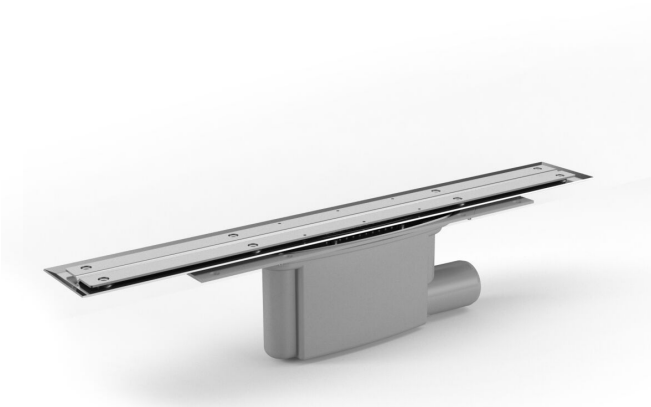
RSK Number	7110546
Dimension	Ø50 mm
Floor Construction	Concrete/Wood
Floor Covering	Tiles
Function	End outlet
Item Color	Grey
Material	PP, ABS, Wood, Stainless steel 1.4301

Pressure Flow Temp	0,8 l/s
Size	600
Version	With frame and Premium rail
RSK Number	7110552
Dimension	Ø50 mm
Floor Construction	Concrete/Wood
Floor Covering	Tiles
Function	End outlet
Item Color	Grey
Material	PP, ABS, Wood, Stainless steel 1.4301
Pressure Flow Temp	0,8 l/s
Size	700
Version	With frame and Premium rail
RSK Number	7110558
Dimension	Ø50 mm
Floor Construction	Concrete/Wood
Floor Covering	Tiles
Function	End outlet

Item Color	Grey
Material	PP, ABS, Wood, Stainless steel 1.4301
Pressure Flow Temp	0,8 l/s
Size	800
Version	With frame and Premium rail
RSK Number	7110564
Dimension	Ø50 mm
Floor Construction	Concrete/Wood
Floor Covering	Tiles
Function	End outlet
Item Color	Grey
Material	PP, ABS, Wood, Stainless steel 1.4301
Pressure Flow Temp	0,8 l/s
Size	900
Version	With frame and Premium rail
RSK Number	7110570
Dimension	Ø50 mm
Floor Construction	Concrete/Wood

Floor Covering	Tiles
Function	End outlet
Item Color	Grey
Material	PP, ABS, Wood, Stainless steel 1.4301
Pressure Flow Temp	0,8 l/s
Size	1000
Version	With frame and Premium rail
RSK Number	7110576
Dimension	Ø50 mm
Floor Construction	Concrete/Wood
Floor Covering	Tiles
Function	End outlet
Item Color	Grey
Material	PP, ABS, Wood, Stainless steel 1.4301
Pressure Flow Temp	0,8 l/s
Size	1200
Version	With frame and Premium rail

RSK 7110546



The Purus Line Premium 600 is a complete linear floor drain with a gable 50 mm outlet. It is designed for installation in wooden or concrete joists. The Purus Line Premium comes complete with a removable NOOD water trap, strainer, stainless steel clamping ring, installation kit, stainless steel frame and the Premium frame which tiles are fixed on to. The NOOD water trap is a mechanical trap which closes when there is no water present, thus preventing any foul air from escaping through the drain. This linear floor drain can be installed against the wall or elsewhere in the room.

RSK 7110552

The Purus Line Premium 700 is a complete linear floor drain with a gable 50 mm outlet. It is designed for installation in wooden or concrete joists. The Purus Line Premium comes complete with a removable NOOD water trap, strainer, stainless steel clamping ring, installation kit, stainless steel frame and the Premium frame which tiles are fixed on to. The NOOD water trap is a mechanical trap which closes when there is no water present, thus preventing any foul air from escaping through the drain. This linear floor drain can be installed against the wall or elsewhere in the room.

RSK 7110558

The Purus Line Premium 800 is a complete linear floor drain with a gable 50 mm outlet. It is designed for installation in wooden or

concrete joists. The Purus Line Premium comes complete with a removable NOOD water trap, strainer, stainless steel clamping ring, installation kit, stainless steel frame and the Premium frame which tiles are fixed on to. The NOOD water trap is a mechanical trap which closes when there is no water present, thus preventing any foul air from escaping through the drain. This linear floor drain can be installed against the wall or elsewhere in the room.

RSK 7110564

The Purus Line Premium 900 is a complete linear floor drain with a gable 50 mm outlet. It is designed for installation in wooden or concrete joists. The Purus Line Premium comes complete with a removable NOOD water trap, strainer, stainless steel clamping ring, installation kit, stainless steel frame and the Premium frame which tiles are fixed on to. The NOOD water trap is a mechanical trap which closes when there is no water present, thus preventing any foul air from escaping through the drain. This linear floor drain can be installed against the wall or elsewhere in the room.

RSK 7110570

The Purus Line Premium 1000 is a complete linear floor drain with a gable 50 mm outlet. It is designed for installation in wooden or concrete joists. The Purus Line Premium comes complete with a removable NOOD water trap, strainer, stainless steel clamping ring, installation kit, stainless steel frame and the Premium frame which tiles are fixed on to. The NOOD water trap is a mechanical trap which closes when there is no water present, thus preventing any foul air from escaping through the drain. This linear floor drain can be installed

against the wall or elsewhere in the room.

RSK 7110576

The Purus Line Premium 1200 is a complete linear floor drain with a gable 50 mm outlet. It is designed for installation in wooden or concrete joists. The Purus Line Premium comes complete with a removable NOOD water trap, strainer, stainless steel clamping ring, installation kit, stainless steel frame and the Premium frame which tiles are fixed on to. The NOOD water trap is a mechanical trap which closes when there is no water present, thus preventing any foul air from escaping through the drain. This linear floor drain can be installed against the wall or elsewhere in the room.

Specifications

MPN: 7012. SKU: 7110541, 7110547, 7110553, 7110559, 7110565, 7110571. GTIN: 07394000209840, 07394000209918, 07394000209987, 07394000250057, 07394000250224, 07394000250293. RSK: 7110541, 7110547, 7110553, 7110559, 7110565, 7110571

RSK Number	7110546
Dimension	Ø50 mm
Floor Construction	Concrete/Wood
Floor Covering	Tiles
Function	End outlet
Item Color	Grey
Material	PP, ABS, Wood, Stainless steel 1.4301

Pressure Flow Temp	0,8 l/s
Size	600
Version	With frame and Premium rail
RSK Number	7110552
Dimension	Ø50 mm
Floor Construction	Concrete/Wood
Floor Covering	Tiles
Function	End outlet
Item Color	Grey
Material	PP, ABS, Wood, Stainless steel 1.4301
Pressure Flow Temp	0,8 l/s
Size	700
Version	With frame and Premium rail
RSK Number	7110558
Dimension	Ø50 mm
Floor Construction	Concrete/Wood
Floor Covering	Tiles
Function	End outlet

Item Color	Grey
Material	PP, ABS, Wood, Stainless steel 1.4301
Pressure Flow Temp	0,8 l/s
Size	800
Version	With frame and Premium rail
RSK Number	7110564
Dimension	Ø50 mm
Floor Construction	Concrete/Wood
Floor Covering	Tiles
Function	End outlet
Item Color	Grey
Material	PP, ABS, Wood, Stainless steel 1.4301
Pressure Flow Temp	0,8 l/s
Size	900
Version	With frame and Premium rail
RSK Number	7110570
Dimension	Ø50 mm
Floor Construction	Concrete/Wood

Floor Covering	Tiles
Function	End outlet
Item Color	Grey
Material	PP, ABS, Wood, Stainless steel 1.4301
Pressure Flow Temp	0,8 l/s
Size	1000
Version	With frame and Premium rail
RSK Number	7110576
Dimension	Ø50 mm
Floor Construction	Concrete/Wood
Floor Covering	Tiles
Function	End outlet
Item Color	Grey
Material	PP, ABS, Wood, Stainless steel 1.4301
Pressure Flow Temp	0,8 l/s
Size	1200
Version	With frame and Premium rail