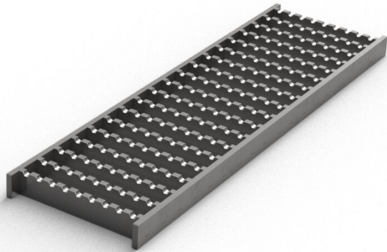


## RSK 7130128

Ladder grating is made of stainless steel.  
Ladder grating is a non-slip grid with load class L15 (1500 kg) for easier driving traffic.  
Dimensions 100×300 mm.



## RSK 7130129

Ladder grating is made of stainless steel.  
Ladder grating is a non-slip grid with load class L15 (1500 kg) for easier driving traffic.  
Dimensions 100×400 mm.

## RSK 7130130

Ladder grating is made of stainless steel.  
Ladder grating is a non-slip grid with load class L15 (1500 kg) for easier driving traffic.  
Dimensions 100×500 mm.

## RSK 7130132

Ladder grating is made of stainless steel.  
Ladder grating is a non-slip grid with load class L15 (1500 kg) for easier driving traffic.  
Dimensions 150×300 mm.

## RSK 7130133

Ladder grating is made of stainless steel.  
Ladder grating is a non-slip grid with load class L15 (1500 kg) for easier driving traffic.  
Dimensions 150×400 mm.

## RSK 7130134

Ladder grating is made of stainless steel.  
Ladder grating is a non-slip grid with load class L15 (1500 kg) for easier driving traffic.  
Dimensions 150×500 mm.

RSK 7130135

Ladder grating is made of stainless steel.  
Ladder grating is a non-slip grid with load class L15 (1500 kg) for easier driving traffic.  
Dimensions 300×300 mm.

RSK 7130136

Ladder grating is made of stainless steel.  
Ladder grating is a non-slip grid with load class L15 (1500 kg) for easier driving traffic.  
Dimensions 300×400 mm.

RSK 7130137

Ladder grating is made of stainless steel.  
Ladder grating is a non-slip grid with load class L15 (1500 kg) for easier driving traffic.  
Dimensions 300×500 mm.

RSK 7130138

Ladder grating is made of stainless steel.  
Ladder grating is a non-slip grid with load class M125 (12 500 kg) for truck and traffic.  
Dimensions 100×300 mm.

RSK 7130140

Ladder grating is made of stainless steel.  
Ladder grating is a non-slip grid with load class M125 (12 500 kg) for truck and traffic.

Dimensions 100×500 mm.

RSK 7130168

Ladder grating is made of stainless steel.  
Ladder grating is a non-slip grid with load class L15 (1500 kg) for easier driving traffic.  
Dimensions 200×200 mm.

RSK 7130139

Ladder grating is made of stainless steel.  
Ladder grating is a non-slip grid with load class M125 (12 500 kg) for truck and traffic.  
Dimensions 100×400 mm.

RSK 7130141

Ladder grating is made of stainless steel.  
Ladder grating is a non-slip grid with load class M125 (12 500 kg) for truck and traffic.  
Dimensions 150×300 mm.

RSK 7130142

Ladder grating is made of stainless steel.  
Ladder grating is a non-slip grid with load class M125 (12 500 kg) for truck and traffic.  
Dimensions 150×400 mm.

RSK 7130143

Ladder grating is made of stainless steel.  
Ladder grating is a non-slip grid with load class M125 (12 500 kg) for truck and traffic.  
Dimensions 150×500 mm.

RSK 7130144

Ladder grating is made of stainless steel.  
Ladder grating is a non-slip grid with load class M125 (12 500 kg) for truck and traffic.  
Dimensions 300×300 mm.

RSK 7130145

Ladder grating is made of stainless steel.  
Ladder grating is a non-slip grid with load class M125 (12 500 kg) for truck and traffic.  
Dimensions 300×400 mm.

RSK 7130146

Ladder grating is made of stainless steel.  
Ladder grating is a non-slip grid with load class M125 (12 500 kg) for truck and traffic.  
Dimensions 300×500 mm.

RSK 7130169

Ladder grating is made of stainless steel.  
Ladder grating is a non-slip grid with load class M125 (12 500 kg) for truck and traffic.  
Dimensions 200×200 mm.

## Specifications

<b>RSK Number</b>	7130128
<b>Function</b>	For Purus channels
<b>Item Color</b>	Stainless
<b>Material</b>	Stainless steel 1.4301
<b>Pressure Flow Temp</b>	L15

<b>Size</b>	100×300 mm
<b>Surface</b>	Pickled
<b>Version</b>	Rib grate
<b>RSK Number</b>	7130129
<b>Function</b>	For Purus channels
<b>Item Color</b>	Stainless
<b>Material</b>	Stainless steel 1.4301
<b>Pressure Flow Temp</b>	L15
<b>Size</b>	100×400 mm
<b>Surface</b>	Pickled
<b>Version</b>	Rib grate
<b>RSK Number</b>	7130130
<b>Function</b>	For Purus channels
<b>Item Color</b>	Stainless
<b>Material</b>	Stainless steel 1.4301
<b>Pressure Flow Temp</b>	L15
<b>Size</b>	100×500 mm
<b>Surface</b>	Pickled
<b>Version</b>	Rib grate

<b>RSK Number</b>	7130132
<b>Function</b>	For Purus channels
<b>Item Color</b>	Stainless
<b>Material</b>	Stainless steel 1.4301
<b>Pressure Flow Temp</b>	L15
<b>Size</b>	150×300 mm
<b>Surface</b>	Pickled
<b>Version</b>	Rib grate

<b>RSK Number</b>	7130133
<b>Function</b>	For Purus channels
<b>Item Color</b>	Stainless
<b>Material</b>	Stainless steel 1.4301
<b>Pressure Flow Temp</b>	L15
<b>Size</b>	150×400 mm
<b>Surface</b>	Pickled
<b>Version</b>	Rib grate

<b>RSK Number</b>	7130134
<b>Function</b>	For Purus channels
<b>Item Color</b>	Stainless

<b>Material</b>	Stainless steel 1.4301
<b>Pressure Flow Temp</b>	L15
<b>Size</b>	150×500 mm
<b>Surface</b>	Pickled
<b>Version</b>	Rib grate

<b>RSK Number</b>	7130135
<b>Function</b>	For Purus channels
<b>Item Color</b>	Stainless

<b>Material</b>	Stainless steel 1.4301
<b>Pressure Flow Temp</b>	L15
<b>Size</b>	300×300 mm
<b>Surface</b>	Pickled
<b>Version</b>	Rib grate

<b>RSK Number</b>	7130136
<b>Function</b>	For Purus channels
<b>Item Color</b>	Stainless

<b>Material</b>	Stainless steel 1.4301
<b>Pressure Flow Temp</b>	L15

<b>Size</b>	300×400 mm
<b>Surface</b>	Pickled
<b>Version</b>	Rib grate
<b>RSK Number</b>	7130137
<b>Function</b>	For Purus channels
<b>Item Color</b>	Stainless
<b>Material</b>	Stainless steel 1.4301
<b>Pressure Flow Temp</b>	L15
<b>Size</b>	300×500 mm
<b>Surface</b>	Pickled
<b>Version</b>	Rib grate
<b>RSK Number</b>	7130138
<b>Function</b>	For Purus channels
<b>Item Color</b>	Stainless
<b>Material</b>	Stainless steel 1.4301
<b>Pressure Flow Temp</b>	M125
<b>Size</b>	100×300 mm
<b>Surface</b>	Pickled
<b>Version</b>	Rib grate



<b>RSK Number</b>	7130140
<b>Function</b>	For Purus channels
<b>Item Color</b>	Stainless
<b>Material</b>	Stainless steel 1.4301
<b>Pressure Flow Temp</b>	M125
<b>Size</b>	100×500 mm
<b>Surface</b>	Pickled
<b>Version</b>	Rib grate

<b>RSK Number</b>	7130168
<b>Function</b>	For Purus channels
<b>Item Color</b>	Stainless
<b>Material</b>	Stainless steel 1.4301
<b>Pressure Flow Temp</b>	L15
<b>Size</b>	200×200 mm
<b>Surface</b>	Pickled
<b>Version</b>	Rib grate

<b>RSK Number</b>	7130139
<b>Function</b>	For Purus channels
<b>Item Color</b>	Stainless

<b>Material</b>	Stainless steel 1.4301
<b>Pressure Flow Temp</b>	M125
<b>Size</b>	100×400 mm
<b>Surface</b>	Pickled
<b>Version</b>	Rib grate

<b>RSK Number</b>	7130141
<b>Function</b>	For Purus channels
<b>Item Color</b>	Stainless

<b>Material</b>	Stainless steel 1.4301
<b>Pressure Flow Temp</b>	M125
<b>Size</b>	150×300 mm
<b>Surface</b>	Pickled
<b>Version</b>	Rib grate

<b>RSK Number</b>	7130142
<b>Function</b>	For Purus channels
<b>Item Color</b>	Stainless

<b>Material</b>	Stainless steel 1.4301
<b>Pressure Flow Temp</b>	M125

<b>Size</b>	150×400 mm
<b>Surface</b>	Pickled
<b>Version</b>	Rib grate
<b>RSK Number</b>	7130143
<b>Function</b>	For Purus channels
<b>Item Color</b>	Stainless
<b>Material</b>	Stainless steel 1.4301
<b>Pressure Flow Temp</b>	M125
<b>Size</b>	150×500 mm
<b>Surface</b>	Pickled
<b>Version</b>	Rib grate
<b>RSK Number</b>	7130144
<b>Function</b>	For Purus channels
<b>Item Color</b>	Stainless
<b>Material</b>	Stainless steel 1.4301
<b>Pressure Flow Temp</b>	M125
<b>Size</b>	300×300 mm
<b>Surface</b>	Pickled
<b>Version</b>	Rib grate

<b>RSK Number</b>	7130145
<b>Function</b>	For Purus channels
<b>Item Color</b>	Stainless
<b>Material</b>	Stainless steel 1.4301
<b>Pressure Flow Temp</b>	M125
<b>Size</b>	300×400 mm
<b>Surface</b>	Pickled
<b>Version</b>	Rib grate

<b>RSK Number</b>	7130146
<b>Function</b>	For Purus channels
<b>Item Color</b>	Stainless
<b>Material</b>	Stainless steel 1.4301
<b>Pressure Flow Temp</b>	M125
<b>Size</b>	300×500 mm
<b>Surface</b>	Pickled
<b>Version</b>	Rib grate

<b>RSK Number</b>	7130169
<b>Function</b>	For Purus channels
<b>Item Color</b>	Stainless

<b>Material</b>	Stainless steel 1.4301
<b>Pressure Flow Temp</b>	M125
<b>Size</b>	200×200 mm
<b>Surface</b>	Pickled
<b>Version</b>	Rib grate

