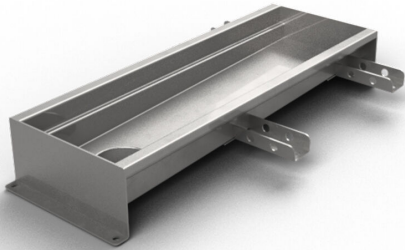


RSK 7097003

Purus channel 150 is a channel made of acid-resistant stainless steel for installation in concrete floors. The channel has a central outlet and is intended for concrete floors as a surface layer. Supplement with gully base in plastic or acid-resistant stainless steel and mesh grate for higher load classes or grating for K3 (300 kg) load.



RSK 7097004

Purus channel 150 is a channel made of acid-resistant stainless steel for installation in concrete floors. The channel has a central outlet and is intended for concrete floors as a surface layer. Supplement with gully base in plastic or acid-resistant stainless steel and mesh grate for higher load classes or grating for K3 (300 kg) load.

RSK 7097005

Purus channel 150 is a channel made of acid-resistant stainless steel for installation in concrete floors. The channel has a central outlet and is intended for concrete floors as a surface layer. Supplement with gully base in plastic or acid-resistant stainless steel and mesh grate for higher load classes or grating for K3 (300 kg) load.

RSK 7103010

Purus channel 150 is a channel made of acid-resistant stainless steel for installation in concrete floors. The channel has a central outlet and is intended for concrete floors as

a surface layer. Supplement with gully base in plastic or acid-resistant stainless steel and mesh grate for higher load classes or grating for K3 (300 kg) load.

RSK 7103015

Purus channel 150 is a channel made of acid-resistant stainless steel for installation in concrete floors. The channel has a central outlet and is intended for concrete floors as a surface layer. Supplement with gully base in plastic or acid-resistant stainless steel and mesh grate for higher load classes or grating for K3 (300 kg) load.

RSK 7103011

Purus channel 150 is a channel made of acid-resistant stainless steel for installation in concrete floors. The channel has a central outlet and is intended for concrete floors as a surface layer. Supplement with gully base in plastic or acid-resistant stainless steel and mesh grate for higher load classes or grating for K3 (300 kg) load.

RSK 7103012

Purus channel 150 is a channel made of acid-resistant stainless steel for installation in concrete floors. The channel has a central outlet and is intended for concrete floors as a surface layer. Supplement with gully base in plastic or acid-resistant stainless steel and mesh grate for higher load classes or grating for K3 (300 kg) load.

RSK 7103014

Purus channel 150 is a channel made of acid-resistant stainless steel for installation in concrete floors. The channel has a central outlet and is intended for concrete floors as a surface layer. Supplement with gully base in plastic or acid-resistant stainless steel and mesh grate for higher load classes or grating for K3 (300 kg) load.

RSK 7103016

Purus channel 150 is a channel made of acid-resistant stainless steel for installation in concrete floors. The channel has a central outlet and is intended for concrete floors as a surface layer. Supplement with gully base in plastic or acid-resistant stainless steel and mesh grate for higher load classes or grating for K3 (300 kg) load.

RSK 7103017

Purus channel 150 is a channel made of acid-resistant stainless steel for installation in concrete floors. The channel has a central outlet and is intended for concrete floors as a surface layer. Supplement with gully base in plastic or acid-resistant stainless steel and mesh grate for higher load classes or grating for K3 (300 kg) load.

RSK 7103018

Purus channel 150 is a channel made of acid-resistant stainless steel for installation in concrete floors. The channel has a central outlet and is intended for concrete floors as a surface layer. Supplement with gully base in plastic or acid-resistant stainless steel and mesh grate for higher load classes or grating for K3 (300 kg) load.

RSK 7103019

Purus channel 150 is a channel made of acid-resistant stainless steel for installation in concrete floors. The channel has a central outlet and is intended for concrete floors as a surface layer. Supplement with gully base in plastic or acid-resistant stainless steel and mesh grate for higher load classes or grating for K3 (300 kg) load.

Specifications

Purus channel 150 is a channel made of acid-resistant stainless steel for installation in concrete floors. The channel has a central outlet and is intended for concrete floors as a surface layer. Supplement with gully base in plastic or acid-resistant stainless steel and mesh grate for higher load classes or grating for K3 (300 kg) load.

RSK Number	7097003
Dimension	Bottom/side in plastic or stainless steel in Ø50, Ø75 or Ø 110 mm
Floor Construction	Concrete flooring
Floor Covering	Concrete
Function	End outlet
Item Color	Stainless
Material	Acid-resistant stainless steel 1.4404
Size	800×150 mm
Surface	Pickled
Version	Do not forget grid/outlet house

RSK Number	7097004
Dimension	Bottom/side in plastic or stainless steel in Ø50, Ø75 or Ø 110 mm
Floor Construction	Concrete flooring
Floor Covering	Concrete
Function	End outlet
Item Color	Stainless
Material	Acid-resistant stainless steel 1.4404
Size	1000×150 mm
Surface	Pickled
Version	Do not forget grid/outlet house

RSK Number	7097005
Dimension	Bottom/side in plastic or stainless steel in Ø50, Ø75 or Ø 110 mm
Floor Construction	Concrete flooring
Floor Covering	Concrete
Function	End outlet
Item Color	Stainless
Material	Acid-resistant stainless steel 1.4404
Size	1200×150 mm

Surface	Pickled
Version	Do not forget grid/outlet house
RSK Number	7103010
Dimension	Bottom/side in plastic or stainless steel in Ø50, Ø75 or Ø 110 mm
Floor Construction	Concrete flooring
Floor Covering	Concrete
Function	End outlet
Item Color	Stainless
Material	Acid-resistant stainless steel 1.4404
Size	500×150 mm
Surface	Pickled
Version	Do not forget grid/outlet house
RSK Number	7103015
Dimension	Bottom/side in plastic or stainless steel in Ø50, Ø75 or Ø 110 mm
Floor Construction	Concrete flooring
Floor Covering	Concrete
Function	End outlet
Item Color	Stainless

Material	Acid-resistant stainless steel 1.4404
Size	1300×150 mm
Surface	Pickled
Version	Do not forget grid/outlet house
RSK Number	7103011
Dimension	Bottom/side in plastic or stainless steel in Ø50, Ø75 or Ø 110 mm
Floor Construction	Concrete flooring
Floor Covering	Concrete
Function	End outlet
Item Color	Stainless
Material	Acid-resistant stainless steel 1.4404
Size	600×150 mm
Surface	Pickled
Version	Do not forget grid/outlet house
RSK Number	7103012
Dimension	Bottom/side in plastic or stainless steel in Ø50, Ø75 or Ø 110 mm
Floor Construction	Concrete flooring
Floor Covering	Concrete

Function	End outlet
Item Color	Stainless
Material	Acid-resistant stainless steel 1.4404
Size	900×150 mm
Surface	Pickled
Version	Do not forget grid/outlet house
RSK Number	7103014
Dimension	Bottom/side in plastic or stainless steel in Ø50, Ø75 or Ø 110 mm
Floor Construction	Concrete flooring
Floor Covering	Concrete
Function	End outlet
Item Color	Stainless
Material	Acid-resistant stainless steel 1.4404
Size	1100×150 mm
Surface	Pickled
Version	Do not forget grid/outlet house
RSK Number	7103016
Dimension	Bottom/side in plastic or stainless steel in Ø50, Ø75 or Ø 110 mm

Floor Construction	Concrete flooring
Floor Covering	Concrete
Function	End outlet
Item Color	Stainless
Material	Acid-resistant stainless steel 1.4404
Size	1400×150 mm
Surface	Pickled
Version	Do not forget grid/outlet house
RSK Number	7103017
Dimension	Bottom/side in plastic or stainless steel in Ø50, Ø75 or Ø 110 mm
Floor Construction	Concrete flooring
Floor Covering	Concrete
Function	End outlet
Item Color	Stainless
Material	Acid-resistant stainless steel 1.4404
Size	1500×150 mm
Surface	Pickled
Version	Do not forget grid/outlet house

RSK Number	7103018
Dimension	Bottom/side in plastic or stainless steel in Ø50, Ø75 or Ø 110 mm
Floor Construction	Concrete flooring
Floor Covering	Concrete
Function	End outlet
Item Color	Stainless
Material	Acid-resistant stainless steel 1.4404
Size	2000×150 mm
Surface	Pickled
Version	Do not forget grid/outlet house

RSK Number	7103019
Dimension	Bottom/side in plastic or stainless steel in Ø50, Ø75 or Ø 110 mm
Floor Construction	Concrete flooring
Floor Covering	Concrete
Function	End outlet
Item Color	Stainless
Material	Acid-resistant stainless steel 1.4404
Size	2500×150 mm

Surface

Pickled

Version

Do not forget grid/outlet house