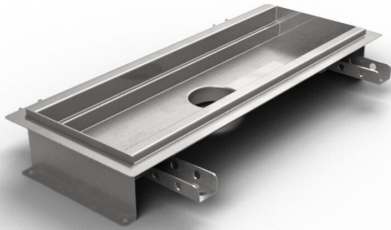


## RSK 7097006

Purus channel 150 is a channel made of acid-resistant stainless steel for installation in concrete floors. The channel has a central outlet and is intended for resin floors as a surface layer. Supplement with gully base in plastic or acid-resistant stainless steel and mesh grate for higher load classes or grating for K3 (300 kg) load.



## RSK 7097007

Purus channel 150 is a channel made of acid-resistant stainless steel for installation in concrete floors. The channel has a central outlet and is intended for resin floors as a surface layer. Supplement with gully base in plastic or acid-resistant stainless steel and mesh grate for higher load classes or grating for K3 (300 kg) load.

## RSK 7097008

Purus channel 150 is a channel made of acid-resistant stainless steel for installation in concrete floors. The channel has a central outlet and is intended for resin floors as a surface layer. Supplement with gully base in plastic or acid-resistant stainless steel and mesh grate for higher load classes or grating for K3 (300 kg) load.

## RSK 7103020

Purus channel 150 is a channel made of acid-resistant stainless steel for installation in concrete floors. The channel has a central outlet and is intended for resin floors as a

surface layer. Supplement with gully base in plastic or acid-resistant stainless steel and mesh grate for higher load classes or grating for K3 (300 kg) load.

#### RSK 7103024

Purus channel 150 is a channel made of acid-resistant stainless steel for installation in concrete floors. The channel has a central outlet and is intended for resin floors as a surface layer. Supplement with gully base in plastic or acid-resistant stainless steel and mesh grate for higher load classes or grating for K3 (300 kg) load.

#### RSK 7103021

Purus channel 150 is a channel made of acid-resistant stainless steel for installation in concrete floors. The channel has a central outlet and is intended for resin floors as a surface layer. Supplement with gully base in plastic or acid-resistant stainless steel and mesh grate for higher load classes or grating for K3 (300 kg) load.

#### RSK 7103022

Purus channel 150 is a channel made of acid-resistant stainless steel for installation in concrete floors. The channel has a central outlet and is intended for resin floors as a surface layer. Supplement with gully base in plastic or acid-resistant stainless steel and mesh grate for higher load classes or grating for K3 (300 kg) load.

#### RSK 7103023

Purus channel 150 is a channel made of acid-resistant stainless steel for installation in concrete floors. The channel has a central outlet and is intended for resin floors as a surface layer. Supplement with gully base in plastic or acid-resistant stainless steel and mesh grate for higher load classes or grating for K3 (300 kg) load.

RSK 7103025

Purus channel 150 is a channel made of acid-resistant stainless steel for installation in concrete floors. The channel has a central outlet and is intended for resin floors as a surface layer. Supplement with gully base in plastic or acid-resistant stainless steel and mesh grate for higher load classes or grating for K3 (300 kg) load.

RSK 7103026

Purus channel 150 is a channel made of acid-resistant stainless steel for installation in concrete floors. The channel has a central outlet and is intended for resin floors as a surface layer. Supplement with gully base in plastic or acid-resistant stainless steel and mesh grate for higher load classes or grating for K3 (300 kg) load.

RSK 7103027

Purus channel 150 is a channel made of acid-resistant stainless steel for installation in concrete floors. The channel has a central outlet and is intended for resin floors as a surface layer. Supplement with gully base in plastic or acid-resistant stainless steel and mesh grate for higher load classes or grating for K3 (300 kg) load.

RSK 7103028

Purus channel 150 is a channel made of acid-resistant stainless steel for installation in concrete floors. The channel has a central outlet and is intended for resin floors as a surface layer. Supplement with gully base in plastic or acid-resistant stainless steel and mesh grate for higher load classes or grating for K3 (300 kg) load.

## Specifications

Purus channel 150 is a channel made of acid-resistant stainless steel for installation in concrete floors. The channel has a central outlet and is intended for resin floors as a surface layer. Supplement with gully base in plastic or acid-resistant stainless steel and mesh grate for higher load classes or grating for K3 (300 kg) load.

<b>RSK Number</b>	7097006
<b>Dimension</b>	Bottom/side in plastic or stainless steel in Ø50, Ø75 or Ø 110 mm
<b>Floor Construction</b>	Concrete flooring
<b>Floor Covering</b>	Resin
<b>Function</b>	Central outlet
<b>Item Color</b>	Stainless
<b>Material</b>	Acid-resistant stainless steel 1.4404
<b>Size</b>	800×150 mm
<b>Surface</b>	Pickled
<b>Version</b>	Do not forget grid/outlet house

<b>RSK Number</b>	7097007
<b>Dimension</b>	Bottom/side in plastic or stainless steel in Ø50, Ø75 or Ø 110 mm
<b>Floor Construction</b>	Concrete flooring
<b>Floor Covering</b>	Resin
<b>Function</b>	Central outlet
<b>Item Color</b>	Stainless
<b>Material</b>	Acid-resistant stainless steel 1.4404
<b>Size</b>	1000×150 mm
<b>Surface</b>	Pickled
<b>Version</b>	Do not forget grid/outlet house

<b>RSK Number</b>	7097008
<b>Dimension</b>	Bottom/side in plastic or stainless steel in Ø50, Ø75 or Ø 110 mm
<b>Floor Construction</b>	Concrete flooring
<b>Floor Covering</b>	Resin
<b>Function</b>	Central outlet
<b>Item Color</b>	Stainless
<b>Material</b>	Acid-resistant stainless steel 1.4404
<b>Size</b>	1200×150 mm

<b>Surface</b>	Pickled
<b>Version</b>	Do not forget grid/outlet house
<b>RSK Number</b>	7103020
<b>Dimension</b>	Bottom/side in plastic or stainless steel in Ø50, Ø75 or Ø 110 mm
<b>Floor Construction</b>	Concrete flooring
<b>Floor Covering</b>	Resin
<b>Function</b>	Central outlet
<b>Item Color</b>	Stainless
<b>Material</b>	Acid-resistant stainless steel 1.4404
<b>Size</b>	500×150 mm
<b>Surface</b>	Pickled
<b>Version</b>	Do not forget grid/outlet house
<b>RSK Number</b>	7103024
<b>Dimension</b>	Bottom/side in plastic or stainless steel in Ø50, Ø75 or Ø 110 mm
<b>Floor Construction</b>	Concrete flooring
<b>Floor Covering</b>	Resin
<b>Function</b>	Central outlet
<b>Item Color</b>	Stainless

<b>Material</b>	Acid-resistant stainless steel 1.4404
<b>Size</b>	1300×150 mm
<b>Surface</b>	Pickled
<b>Version</b>	Do not forget grid/outlet house
<b>RSK Number</b>	7103021
<b>Dimension</b>	Bottom/side in plastic or stainless steel in Ø50, Ø75 or Ø 110 mm
<b>Floor Construction</b>	Concrete flooring
<b>Floor Covering</b>	Resin
<b>Function</b>	Central outlet
<b>Item Color</b>	Stainless
<b>Material</b>	Acid-resistant stainless steel 1.4404
<b>Size</b>	600×150 mm
<b>Surface</b>	Pickled
<b>Version</b>	Do not forget grid/outlet house
<b>RSK Number</b>	7103022
<b>Dimension</b>	Bottom/side in plastic or stainless steel in Ø50, Ø75 or Ø 110 mm
<b>Floor Construction</b>	Concrete flooring
<b>Floor Covering</b>	Resin

<b>Function</b>	Central outlet
<b>Item Color</b>	Stainless
<b>Material</b>	Acid-resistant stainless steel 1.4404
<b>Size</b>	900×150 mm
<b>Surface</b>	Pickled
<b>Version</b>	Do not forget grid/outlet house
<b>RSK Number</b>	7103023
<b>Dimension</b>	Bottom/side in plastic or stainless steel in Ø50, Ø75 or Ø 110 mm
<b>Floor Construction</b>	Concrete flooring
<b>Floor Covering</b>	Resin
<b>Function</b>	Central outlet
<b>Item Color</b>	Stainless
<b>Material</b>	Acid-resistant stainless steel 1.4404
<b>Size</b>	1100×150 mm
<b>Surface</b>	Pickled
<b>Version</b>	Do not forget grid/outlet house
<b>RSK Number</b>	7103025
<b>Dimension</b>	Bottom/side in plastic or stainless steel in Ø50, Ø75 or Ø 110 mm

<b>Floor Construction</b>	Concrete flooring
<b>Floor Covering</b>	Resin
<b>Function</b>	Central outlet
<b>Item Color</b>	Stainless
<b>Material</b>	Acid-resistant stainless steel 1.4404
<b>Size</b>	1400×150 mm
<b>Surface</b>	Pickled
<b>Version</b>	Do not forget grid/outlet house
<b>RSK Number</b>	7103026
<b>Dimension</b>	Bottom/side in plastic or stainless steel in Ø50, Ø75 or Ø 110 mm
<b>Floor Construction</b>	Concrete flooring
<b>Floor Covering</b>	Resin
<b>Function</b>	Central outlet
<b>Item Color</b>	Stainless
<b>Material</b>	Acid-resistant stainless steel 1.4404
<b>Size</b>	1500×150 mm
<b>Surface</b>	Pickled
<b>Version</b>	Do not forget grid/outlet house

<b>RSK Number</b>	7103027
<b>Dimension</b>	Bottom/side in plastic or stainless steel in Ø50, Ø75 or Ø 110 mm
<b>Floor Construction</b>	Concrete flooring
<b>Floor Covering</b>	Resin
<b>Function</b>	Central outlet
<b>Item Color</b>	Stainless
<b>Material</b>	Acid-resistant stainless steel 1.4404
<b>Size</b>	2000×150 mm
<b>Surface</b>	Pickled
<b>Version</b>	Do not forget grid/outlet house

<b>RSK Number</b>	7103028
<b>Dimension</b>	Bottom/side in plastic or stainless steel in Ø50, Ø75 or Ø 110 mm
<b>Floor Construction</b>	Concrete flooring
<b>Floor Covering</b>	Resin
<b>Function</b>	Central outlet
<b>Item Color</b>	Stainless
<b>Material</b>	Acid-resistant stainless steel 1.4404
<b>Size</b>	2500×150 mm

**Surface**

Pickled

**Version**

Do not forget grid/outlet house