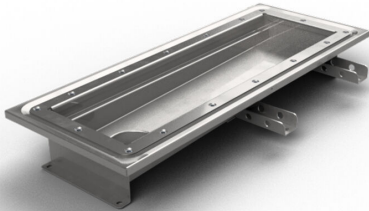


RSK 7097015

Purus channel 150 is a channel made of acid-resistant stainless steel for installation in concrete floors. The channel has a central outlet and is intended for vinyl floors as a surface layer. Supplement with gully base in plastic or acid-resistant stainless steel and mesh grate for higher load classes or grating for K3 (300 kg) load.



RSK 7097016

Purus channel 150 is a channel made of acid-resistant stainless steel for installation in concrete floors. The channel has a central outlet and is intended for vinyl floors as a surface layer. Supplement with gully base in plastic or acid-resistant stainless steel and mesh grate for higher load classes or grating for K3 (300 kg) load.

RSK 7097017

Purus channel 150 is a channel made of acid-resistant stainless steel for installation in concrete floors. The channel has a central outlet and is intended for vinyl floors as a surface layer. Supplement with gully base in plastic or acid-resistant stainless steel and mesh grate for higher load classes or grating for K3 (300 kg) load.

RSK 7103065

Purus channel 150 is a channel made of acid-resistant stainless steel for installation in concrete floors. The channel has a central outlet and is intended for vinyl floors as a

surface layer. Supplement with gully base in plastic or acid-resistant stainless steel and mesh grate for higher load classes or grating for K3 (300 kg) load.

RSK 7103069

Purus channel 150 is a channel made of acid-resistant stainless steel for installation in concrete floors. The channel has a central outlet and is intended for vinyl floors as a surface layer. Supplement with gully base in plastic or acid-resistant stainless steel and mesh grate for higher load classes or grating for K3 (300 kg) load.

RSK 7103066

Purus channel 150 is a channel made of acid-resistant stainless steel for installation in concrete floors. The channel has a central outlet and is intended for vinyl floors as a surface layer. Supplement with gully base in plastic or acid-resistant stainless steel and mesh grate for higher load classes or grating for K3 (300 kg) load.

RSK 7103067

Purus channel 150 is a channel made of acid-resistant stainless steel for installation in concrete floors. The channel has a central outlet and is intended for vinyl floors as a surface layer. Supplement with gully base in plastic or acid-resistant stainless steel and mesh grate for higher load classes or grating for K3 (300 kg) load.

RSK 7103068

Purus channel 150 is a channel made of acid-resistant stainless steel for installation in concrete floors. The channel has a central outlet and is intended for vinyl floors as a surface layer. Supplement with gully base in plastic or acid-resistant stainless steel and mesh grate for higher load classes or grating for K3 (300 kg) load.

RSK 7103070

Purus channel 150 is a channel made of acid-resistant stainless steel for installation in concrete floors. The channel has a central outlet and is intended for vinyl floors as a surface layer. Supplement with gully base in plastic or acid-resistant stainless steel and mesh grate for higher load classes or grating for K3 (300 kg) load.

RSK 7103071

Purus channel 150 is a channel made of acid-resistant stainless steel for installation in concrete floors. The channel has a central outlet and is intended for vinyl floors as a surface layer. Supplement with gully base in plastic or acid-resistant stainless steel and mesh grate for higher load classes or grating for K3 (300 kg) load.

RSK 7103072

Purus channel 150 is a channel made of acid-resistant stainless steel for installation in concrete floors. The channel has a central outlet and is intended for vinyl floors as a surface layer. Supplement with gully base in plastic or acid-resistant stainless steel and mesh grate for higher load classes or grating for K3 (300 kg) load.

RSK 7103073

Purus channel 150 is a channel made of acid-resistant stainless steel for installation in concrete floors. The channel has a central outlet and is intended for vinyl floors as a surface layer. Supplement with gully base in plastic or acid-resistant stainless steel and mesh grate for higher load classes or grating for K3 (300 kg) load.

Specifications

Purus channel 150 is a channel made of acid-resistant stainless steel for installation in concrete floors. The channel has a central outlet and is intended for vinyl floors as a surface layer. Supplement with gully base in plastic or acid-resistant stainless steel and mesh grate for higher load classes or grating for K3 (300 kg) load.

RSK Number	7097015
Dimension	Bottom/side in plastic or stainless steel in Ø50, Ø75 or Ø 110 mm
Floor Construction	Concrete flooring
Floor Covering	Vinyl
Function	End outlet
Item Color	Stainless
Material	Acid-resistant stainless steel 1.4404
Size	800×150 mm
Surface	Pickled
Version	Do not forget grid/outlet house

RSK Number	7097016
Dimension	Bottom/side in plastic or stainless steel in Ø50, Ø75 or Ø 110 mm
Floor Construction	Concrete flooring
Floor Covering	Vinyl
Function	End outlet
Item Color	Stainless
Material	Acid-resistant stainless steel 1.4404
Size	1000×150 mm
Surface	Pickled
Version	Do not forget grid/outlet house

RSK Number	7097017
Dimension	Bottom/side in plastic or stainless steel in Ø50, Ø75 or Ø 110 mm
Floor Construction	Concrete flooring
Floor Covering	Vinyl
Function	End outlet
Item Color	Stainless
Material	Acid-resistant stainless steel 1.4404
Size	1200×150 mm

Surface	Pickled
Version	Do not forget grid/outlet house
RSK Number	7103065
Dimension	Bottom/side in plastic or stainless steel in Ø50, Ø75 or Ø 110 mm
Floor Construction	Concrete flooring
Floor Covering	Vinyl
Function	End outlet
Item Color	Stainless
Material	Acid-resistant stainless steel 1.4404
Size	500×150 mm
Surface	Pickled
Version	Do not forget grid/outlet house
RSK Number	7103069
Dimension	Bottom/side in plastic or stainless steel in Ø50, Ø75 or Ø 110 mm
Floor Construction	Concrete flooring
Floor Covering	Vinyl
Function	End outlet
Item Color	Stainless

Material	Acid-resistant stainless steel 1.4404
Size	1300×150 mm
Surface	Pickled
Version	Do not forget grid/outlet house
RSK Number	7103066
Dimension	Bottom/side in plastic or stainless steel in Ø50, Ø75 or Ø 110 mm
Floor Construction	Concrete flooring
Floor Covering	Vinyl
Function	End outlet
Item Color	Stainless
Material	Acid-resistant stainless steel 1.4404
Size	600×150 mm
Surface	Pickled
Version	Do not forget grid/outlet house
RSK Number	7103067
Dimension	Bottom/side in plastic or stainless steel in Ø50, Ø75 or Ø 110 mm
Floor Construction	Concrete flooring
Floor Covering	Vinyl

Function	End outlet
Item Color	Stainless
Material	Acid-resistant stainless steel 1.4404
Size	900×150 mm
Surface	Pickled
Version	Do not forget grid/outlet house
RSK Number	7103068
Dimension	Bottom/side in plastic or stainless steel in Ø50, Ø75 or Ø 110 mm
Floor Construction	Concrete flooring
Floor Covering	Vinyl
Function	End outlet
Item Color	Stainless
Material	Acid-resistant stainless steel 1.4404
Size	1100×150 mm
Surface	Pickled
Version	Do not forget grid/outlet house
RSK Number	7103070
Dimension	Bottom/side in plastic or stainless steel in Ø50, Ø75 or Ø 110 mm

Floor Construction	Concrete flooring
Floor Covering	Vinyl
Function	End outlet
Item Color	Stainless
Material	Acid-resistant stainless steel 1.4404
Size	1400×150 mm
Surface	Pickled
Version	Do not forget grid/outlet house
RSK Number	7103071
Dimension	Bottom/side in plastic or stainless steel in Ø50, Ø75 or Ø 110 mm
Floor Construction	Concrete flooring
Floor Covering	Vinyl
Function	End outlet
Item Color	Stainless
Material	Acid-resistant stainless steel 1.4404
Size	1500×150 mm
Surface	Pickled
Version	Do not forget grid/outlet house

RSK Number	7103072
Dimension	Bottom/side in plastic or stainless steel in Ø50, Ø75 or Ø 110 mm
Floor Construction	Concrete flooring
Floor Covering	Vinyl
Function	End outlet
Item Color	Stainless
Material	Acid-resistant stainless steel 1.4404
Size	2000×150 mm
Surface	Pickled
Version	Do not forget grid/outlet house

RSK Number	7103073
Dimension	Bottom/side in plastic or stainless steel in Ø50, Ø75 or Ø 110 mm
Floor Construction	Concrete flooring
Floor Covering	Vinyl
Function	End outlet
Item Color	Stainless
Material	Acid-resistant stainless steel 1.4404
Size	2500×150 mm

Surface

Pickled

Version

Do not forget grid/outlet house