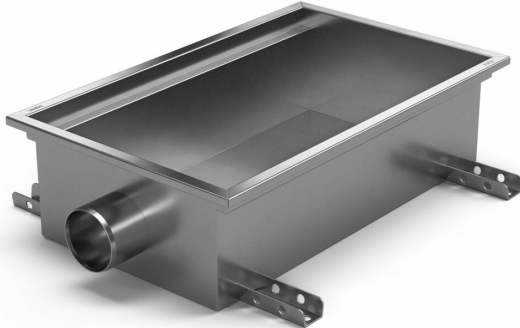


RSK 7098762



Purus channel combo is made of acid-resistant stainless steel with side outlet Ø75 mm for installation in concrete. The floor channel is 300x300x150 and is intended for concrete flooring. There is always residual water in the channel about 50 mm of water forms the water trap in the bottom of the channel and is equipped with a cleaning plug. The floor channel requires an almost continuous flow to function properly. Unsuitable in environments that set hygiene requirements.

RSK 7098764

Purus channel combo is made of acid-resistant stainless steel with side outlet Ø75 mm for installation in concrete. The floor channel is 500x300x150 och är avsedd för betonggolv som ytskick. There is always residual water in the channel about 50 mm of water forms the water trap in the bottom of the channel and is equipped with a cleaning plug. The floor channel requires an almost continuous flow to function properly. Unsuitable in environments that set hygiene requirements.

Specifications

RSK Number	7098762
Floor Construction	Concrete flooring
Floor Covering	Concrete
Function	Side outlet

Item Color	Stainless
Material	Acid-resistant stainless steel 1.4404
Outlet Dimension	Ø75 mm
Pressure Flow Temp	1,3 l/s
Size	300x300x150 mm
Surface	Pickled
Version	Do not forget grid/grating

RSK Number	7098764
Floor Construction	Concrete flooring
Floor Covering	Concrete

Function	Side outlet
-----------------	-------------

Item Color	Stainless
Material	Acid-resistant stainless steel 1.4404
Outlet Dimension	Ø75 mm
Pressure Flow Temp	1,3 l/s
Size	500x300x150 mm
Surface	Pickled
Version	Do not forget grid/grating

Dimension (mm)	LxWxH (mm)	Ø (mm)
300x300x150	303 x 303 x 150	75
300x300x200	303 x 303 x 200	110
500x300x150	503 x 303 x 150	75
500x300x200	503 x 303 x 200	110

