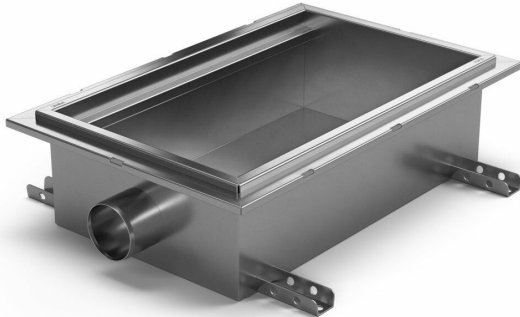


## RSK 7098775



Purus channel combo is made of acid-resistant stainless steel with side outlet Ø110 mm for installation in concrete. The floor channel is 300x300x200 and is intended for tiled flooring. There is always residual water in the channel about 50 mm of water forms the water trap in the bottom of the channel and is equipped with a cleaning plug. The floor channel requires an almost continuous flow to function properly. Unsuitable in environments that set hygiene requirements.

## RSK 7098777

Purus channel combo is made of acid-resistant stainless steel with side outlet Ø110 mm for installation in concrete. The floor channel is 500x300x200 och är avsedd för klinkergolv som ytskick. There is always residual water in the channel about 50 mm of water forms the water trap in the bottom of the channel and is equipped with a cleaning plug. The floor channel requires an almost continuous flow to function properly. Unsuitable in environments that set hygiene requirements.

## Specifications

<b>RSK Number</b>	7098775
<b>Floor Construction</b>	Concrete flooring
<b>Floor Covering</b>	Tile floor with glueing flange
<b>Function</b>	Side outlet

<b>Item Color</b>	Stainless
<b>Material</b>	Acid-resistant stainless steel 1.4404
<b>Outlet Dimension</b>	Ø110 mm
<b>Pressure Flow Temp</b>	3,4 l/s
<b>Size</b>	300x300x200 mm
<b>Surface</b>	Pickled
<b>Version</b>	Do not forget grid/grating

<b>RSK Number</b>	7098777
<b>Floor Construction</b>	Concrete flooring
<b>Floor Covering</b>	Tile floor with glueing flange
<b>Function</b>	Side outlet

<b>Item Color</b>	Stainless
<b>Material</b>	Acid-resistant stainless steel 1.4404
<b>Outlet Dimension</b>	Ø110 mm
<b>Pressure Flow Temp</b>	3,4 l/s
<b>Size</b>	500x300x200 mm
<b>Surface</b>	Pickled
<b>Version</b>	Do not forget grid/grating

Dimension (mm)	LxWxH (mm)	Ø (mm)
300x300x150	303 x 303 x 150	75
300x300x200	303 x 303 x 200	110
500x300x150	503 x 303 x 150	75
500x300x200	503 x 303 x 200	110

