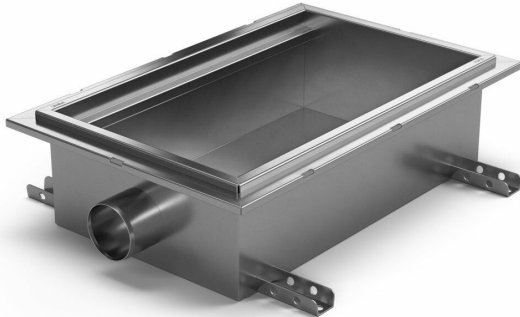


RSK 7098774



Purus channel combo is made of acid-resistant stainless steel with side outlet Ø75 mm for installation in concrete. The floor channel is 300x300x150 och är avsedd för klinkergolv som ytskick. There is always residual water in the channel about 50 mm of water forms the water trap in the bottom of the channel and is equipped with a cleaning plug. The floor channel requires an almost continuous flow to function properly. Unsuitable in environments that set hygiene requirements.

RSK 7098776

Purus channel combo is made of acid-resistant stainless steel with side outlet Ø75 mm for installation in concrete. The floor channel is 500x300x150 och är avsedd för klinkergolv som ytskick. There is always residual water in the channel about 50 mm of water forms the water trap in the bottom of the channel and is equipped with a cleaning plug. The floor channel requires an almost continuous flow to function properly. Unsuitable in environments that set hygiene requirements.

Specifications

RSK Number	7098774
Dimension	Ø75 mm
Floor Construction	Concrete flooring
Floor Covering	Tile floor with glueing flange

Function	Side outlet
Item Color	Stainless
Material	Acid-resistant stainless steel 1.4404
Pressure Flow Temp	1,3 l/s
Size	300x300x150 mm
Surface	Pickled
Version	Do not forget grid/grating

RSK Number	7098776
Dimension	Ø75 mm
Floor Construction	Concrete flooring
Floor Covering	Tile floor with glueing flange

Function	Side outlet
Item Color	Stainless
Material	Acid-resistant stainless steel 1.4404
Pressure Flow Temp	1,3 l/s
Size	500x300x150 mm
Surface	Pickled
Version	Do not forget grid/grating

Dimension (mm)	LxWxH (mm)	Ø (mm)
300x300x150	303 x 303 x 150	75
300x300x200	303 x 303 x 200	110
500x300x150	503 x 303 x 150	75
500x300x200	503 x 303 x 200	110

