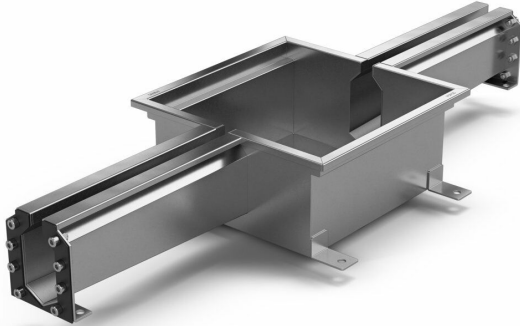


RSK 7098738

Purus channel spalte module is made of acid-resistant stainless steel for installation in concrete. The floor channel is intended for concrete, epoxy and tile floors without a waterproofing membrane Purus channel spalte module brunnen är 300x300x150, has an inlet and the outlet in the channel is located in the middle. Complete Purus channel spalte module drain with grid outlet house in acid-proof stainless steel and water trap.



RSK 7098739

Purus channel spalte module is made of acid-resistant stainless steel for installation in concrete. The floor channel is intended for concrete, epoxy and tile floors without a waterproofing membrane Purus channel spalte module brunnen är 300x300x150, has two inlets and the outlet in the channel is located in the middle. Complete Purus channel spalte module drain with grid outlet house in acid-proof stainless steel and water trap.

Specifications

Purus channel spalte module is made of acid-resistant stainless steel for installation in concrete. The floor channel is intended for concrete, epoxy and tile floors without a waterproofing membrane Purus channel spalte module brunnen är 300x300x150, has an inlet and the outlet in the channel is located in the middle. Complete Purus channel spalte module drain with grid outlet house in acid-proof stainless steel and water trap.

RSK Number

7098738

Dimension	Ø75/Ø110 mm
Function	Bottom outlet
Item Color	Stainless
Material	Acid-resistant stainless steel 1.4404
Size	300×300 mm
Surface	Pickled
RSK Number	7098739
Dimension	Ø75/Ø110 mm
Function	Bottom outlet
Item Color	Stainless
Material	Acid-resistant stainless steel 1.4404
Size	300×300 mm
Surface	Pickled