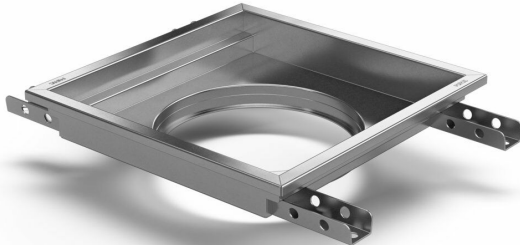


## RSK 7098754

Purus channel square 200 is a floor channel made of acid-resistant stainless steel for installation in concrete flooring. The floor channel is 200×200 and is intended for concrete flooring as a surface. The floor channel needs to be supplemented with grating/grid depending on the environment and outlet house in acid-resistant stainless steel.



## RSK 7098758

Purus channel square 300 is a floor channel made of acid-resistant stainless steel for installation in concrete. The floor channel is 300×300 and is intended for concrete flooring. The floor channel needs to be supplemented with grating/grid depending on the environment and outlet house in acid-resistant stainless steel.

## Specifications

Purus channel square 200 is a floor channel made of acid-resistant stainless steel for installation in concrete flooring. The floor channel is 200×200 and is intended for concrete flooring as a surface. The floor channel needs to be supplemented with grating/grid depending on the environment and outlet house in acid-resistant stainless steel.

<b>RSK Number</b>	7098754
<b>Dimension</b>	Side/bottom in stainless steel in Ø75/Ø110 mm
<b>Electrical Data</b>	1,9 l
<b>Floor</b>	

<b>Construction</b>	Concrete flooring
<b>Floor Covering</b>	Concrete
<b>Function</b>	Central outlet
<b>Item Color</b>	Stainless
<b>Material</b>	Acid-resistant stainless steel 1.4404
<b>Size</b>	200x200x50 mm
<b>Surface</b>	Pickled
<b>Version</b>	Do not forget grid/outlet house
<b>RSK Number</b>	7098758
<b>Dimension</b>	Side/bottom in stainless steel in Ø75/Ø110 mm
<b>Electrical Data</b>	3,9 l
<b>Floor Construction</b>	Concrete flooring
<b>Floor Covering</b>	Concrete
<b>Function</b>	Central outlet
<b>Item Color</b>	Stainless
<b>Material</b>	Acid-resistant stainless steel 1.4404
<b>Size</b>	300x300x50 mm
<b>Surface</b>	Pickled
<b>Version</b>	Do not forget grid/outlet house

