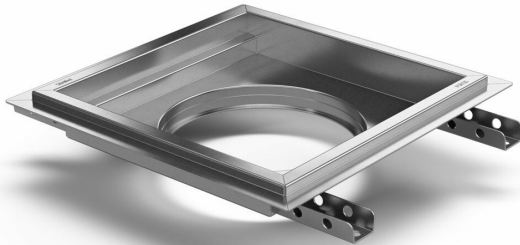


RSK 7098756

Purus channel square 200 is a floor channel made of acid-resistant stainless steel for installation in concrete flooring. The floor channel is 200×200 och är avsedd för massagolv som ytskikt. The floor channel needs to be supplemented with grating/grid depending on the environment and outlet house in acid-resistant stainless steel.



RSK 7098760

Purus channel square 300 is a floor channel made of acid-resistant stainless steel for installation in concrete. The floor channel is 300×300 och är avsedd för massagolv som ytskikt. The floor channel needs to be supplemented with grating/grid depending on the environment and outlet house in acid-resistant stainless steel.

Specifications

Purus channel square 200 is a floor channel made of acid-resistant stainless steel for installation in concrete flooring. The floor channel is 200×200 och är avsedd för massagolv som ytskikt. The floor channel needs to be supplemented with grating/grid depending on the environment and outlet house in acid-resistant stainless steel.

RSK Number	7098756
Dimension	Side/bottom in stainless steel in Ø75/Ø110 mm
Electrical Data	1,9 l
Floor	Concrete flooring

Construction	
Floor Covering	Resin
Function	Central outlet
Item Color	Stainless
Material	Acid-resistant stainless steel 1.4404
Size	200x200x50 mm
Surface	Pickled
Version	Do not forget grid/outlet house
RSK Number	7098760
Dimension	Side/bottom in stainless steel in Ø75/Ø110 mm
Electrical Data	3,9 l
Floor Construction	Concrete flooring
Floor Covering	Resin
Function	Central outlet
Item Color	Stainless
Material	Acid-resistant stainless steel 1.4404
Size	300x300x50 mm
Surface	Pickled
Version	Do not forget grid/outlet house

