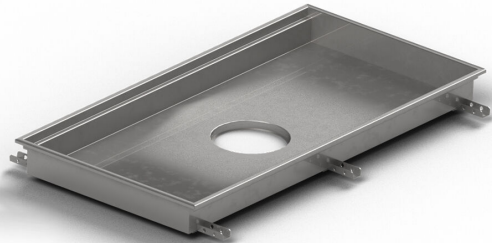


RSK 7098778



Purus channel volume for concrete floors is a floor channel made of acid-resistant stainless steel for installation in concrete. The floor channel is 400x400x100 mm with a mid outlet and is intended for concrete flooring. The floor channel needs to be supplemented with grid depending on the environment and outlet house in acid-resistant stainless steel. Purus channel volume is adapted for environments with requirements for hygiene, has a large volume and high flow capacity.

RSK 7098779

Purus channel volume for concrete floors is a floor channel made of acid-resistant stainless steel for installation in concrete. The floor channel is 600x400x100 mm with a mid outlet and is intended for concrete flooring. The floor channel needs to be supplemented with grid depending on the environment and outlet house in acid-resistant stainless steel. Purus channel volume is adapted for environments with requirements for hygiene, has a large volume and high flow capacity.

RSK 7098780

Purus channel volume for concrete floors is a floor channel made of acid-resistant stainless steel for installation in concrete. The floor channel is 900x600x100 mm med ett mittplacerat utlopp och är avsedd för betonggolv som ytskikt. The floor channel needs to be supplemented with grid depending on the environment and outlet house in acid-resistant stainless steel. Purus

channel volume is adapted for environments with requirements for hygiene, has a large volume and high flow capacity.

RSK 7098781

Purus channel volume for concrete floors is a floor channel made of acid-resistant stainless steel for installation in concrete. The floor channel is 800x500x100 mm with a mid outlet and is intended for concrete flooring. The floor channel needs to be supplemented with grid depending on the environment and outlet house in acid-resistant stainless steel. Purus channel volume is adapted for environments with requirements for hygiene, has a large volume and high flow capacity.

RSK 7098786

Purus channel volume for concrete floors is a floor channel made of acid-resistant stainless steel for installation in concrete. The floor channel is 1000x300x50 mm med ett mittplacerat utlopp och är avsedd för betonggolv som ytskikt. The floor channel needs to be supplemented with grid depending on the environment and outlet house in acid-resistant stainless steel. Purus channel volume is adapted for environments with requirements for hygiene, has a large volume and high flow capacity.

RSK 7098782

Purus channel volume for concrete floors is a floor channel made of acid-resistant stainless steel for installation in concrete. The floor channel is 300x300x200 mm with a mid outlet and is intended for concrete flooring. The floor channel needs to be

supplemented with grid depending on the environment and outlet house in acid-resistant stainless steel. Purus channel volume is adapted for environments with requirements for hygiene, has a large volume and high flow capacity.

RSK 7098783

Purus channel volume for concrete floors is a floor channel made of acid-resistant stainless steel for installation in concrete. The floor channel is 500x300x200 mm med ett mittplacerat utlopp och är avsedd för betonggolv som ytskikt. The floor channel needs to be supplemented with grid depending on the environment and outlet house in acid-resistant stainless steel. Purus channel volume is adapted for environments with requirements for hygiene, has a large volume and high flow capacity.

RSK 7098784

Purus channel volume for concrete floors is a floor channel made of acid-resistant stainless steel for installation in concrete. The floor channel is 800x500x200 mm with a mid outlet and is intended for concrete flooring. The floor channel needs to be supplemented with grid depending on the environment and outlet house in acid-resistant stainless steel. Purus channel volume is adapted for environments with requirements for hygiene, has a large volume and high flow capacity.

RSK 7098785

Purus channel volume for concrete floors is a floor channel made of acid-resistant stainless steel for installation in concrete.

The floor channel is 500x300x50 mm with a mid outlet and is intended for concrete flooring. The floor channel needs to be supplemented with grid depending on the environment and outlet house in acid-resistant stainless steel. Purus channel volume is adapted for environments with requirements for hygiene, has a large volume and high flow capacity.

RSK 7098787

Purus channel volume for concrete floors is a floor channel made of acid-resistant stainless steel for installation in concrete. The floor channel is 1200x600x100 mm with a mid outlet and is intended for concrete flooring. The floor channel needs to be supplemented with grid depending on the environment and outlet house in acid-resistant stainless steel. Purus channel volume is adapted for environments with requirements for hygiene, has a large volume and high flow capacity.

RSK 7103074

Purus channel volume for epoxy is a floor channel made of acid-resistant stainless steel for installation in concrete. The floor channel is 900x600x200 mm med ett mittplacerat utlopp och är avsedd för massagolv som ytskikt. The floor channel needs to be supplemented with grid depending on the environment and outlet house in acid-resistant stainless steel. Purus channel volume is adapted for environments with requirements for hygiene, has a large volume and high flow capacity.

RSK Number	7098778
Electrical Data	15 l
Floor Construction	Concrete flooring
Floor Covering	Concrete
Function	Central outlet
Item Color	Stainless
Material	Acid-resistant stainless steel 1.4404
Outlet Dimension	Side/bottom in stainless steel in Ø75/Ø110 mm
Size	400x400x100 mm
Surface	Pickled
Version	Do not forget grid/outlet house

RSK Number	7098779
Electrical Data	23 l
Floor Construction	Concrete flooring
Floor Covering	Concrete
Function	Central outlet
Item Color	Stainless
Material	Acid-resistant stainless steel 1.4404
Outlet Dimension	Side/bottom in stainless steel in

Ø75/Ø110 mm

Size	600x400x100 mm
Surface	Pickled
Version	Do not forget grid/outlet house
RSK Number	7098780
Electrical Data	51 l
Floor Construction	Concrete flooring
Floor Covering	Concrete
Function	Central outlet
Item Color	Stainless
Material	Acid-resistant stainless steel 1.4404
Outlet Dimension	Side/bottom in stainless steel in Ø75/Ø110 mm
Size	900x600x100 mm
Surface	Pickled
Version	Do not forget grid/outlet house
RSK Number	7098781
Electrical Data	38 l
Floor Construction	Concrete flooring

Floor Covering	Concrete
Function	Central outlet
Item Color	Stainless
Material	Acid-resistant stainless steel 1.4404
Outlet Dimension	Side/bottom in stainless steel in Ø75/Ø110 mm
Size	800x500x100 mm
Surface	Pickled
Version	Do not forget grid/outlet house
RSK Number	7098786
Floor Construction	Concrete flooring
Floor Covering	Concrete
Function	Central outlet
Item Color	Stainless
Material	Acid-resistant stainless steel 1.4404
Outlet Dimension	Side/bottom in stainless steel in Ø75/Ø110 mm
Size	1000x300x50 mm
Surface	Pickled
Version	Do not forget grid/outlet house

RSK Number	7098782
Floor Construction	Concrete flooring
Floor Covering	Concrete
Function	Central outlet
Item Color	Stainless
Material	Acid-resistant stainless steel 1.4404
Outlet Dimension	Side/bottom in stainless steel in Ø75/Ø110 mm
Size	300x300x200 mm
Surface	Pickled
Version	Do not forget grid/outlet house

RSK Number	7098783
Floor Construction	Concrete flooring
Floor Covering	Concrete
Function	Central outlet
Item Color	Stainless
Material	Acid-resistant stainless steel 1.4404
Outlet Dimension	Side/bottom in stainless steel in Ø75/Ø110 mm
Size	500x300x200 mm

Surface	Pickled
Version	Do not forget grid/outlet house
RSK Number	7098784
Floor Construction	Concrete flooring
Floor Covering	Concrete
Function	Central outlet
Item Color	Stainless
Material	Acid-resistant stainless steel 1.4404
Outlet Dimension	Side/bottom in stainless steel in Ø75/Ø110 mm
Size	800x500x200 mm
Surface	Pickled
Version	Do not forget grid/outlet house
RSK Number	7098785
Floor Construction	Concrete flooring
Floor Covering	Concrete
Function	Central outlet
Item Color	Stainless
Material	Acid-resistant stainless steel 1.4404

Outlet Dimension	Side/bottom in stainless steel in Ø75/Ø110 mm
Size	500x300x50 mm
Surface	Pickled
Version	Do not forget grid/outlet house
RSK Number	7098787
Floor Construction	Concrete flooring
Floor Covering	Concrete
Function	Central outlet
Item Color	Stainless
Material	Acid-resistant stainless steel 1.4404
Outlet Dimension	Side/bottom in stainless steel in Ø75/Ø110 mm
Size	1200x600x100 mm
Surface	Pickled
Version	Do not forget grid/outlet house
RSK Number	7103074
Floor Construction	Concrete flooring
Floor Covering	Concrete
Function	Central outlet

Item Color	Stainless
Material	Acid-resistant stainless steel 1.4404
Outlet Dimension	Side/bottom in stainless steel in Ø75/Ø110 mm
Size	900x600x200 mm
Surface	Pickled
Version	Do not forget grid/outlet house

Dimension (mm)	LxWxH (mm)	Dimension (mm)	LxWxH (mm)
500x300x50	503 x 303 x 50	1200x600x100	1203 x 603 x 100
1000x300x50	1003 x 303 x 50	300x300x200	303 x 303 x 200
400x400x100	403 x 403 x 100	500x300x200	503 x 303 x 200
600x400x100	603 x 403 x 100	800x500x200	803 x 503 x 200
800x500x100	803 x 503 x 100		
900x600x100	903 x 603 x 100		
900x600x200	903 x 603 x 200		

