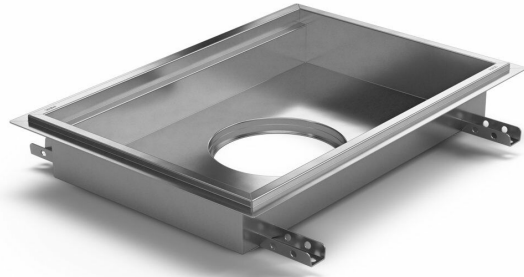


RSK 7098808



Purus channel volume for expoxy is a floor channel made of acid-resistant stainless steel for installation in concrete. The floor channel is 500x300x50 mm med ett mittplacerat utlopp och är avsedd för massagolv som ytskikt. The floor channel needs to be supplemented with grid depending on the environment and outlet house in acid-resistant stainless steel. Purus channel volume is adapted for environments with requirements for hygiene, has a large volume and high flow capacity.

RSK 7098809

Purus channel volume for expoxy is a floor channel made of acid-resistant stainless steel for installation in concrete. The floor channel is 400x400x100 mm med ett mittplacerat utlopp och är avsedd för massagolv som ytskikt. The floor channel needs to be supplemented with grid depending on the environment and outlet house in acid-resistant stainless steel. Purus channel volume is adapted for environments with requirements for hygiene, has a large volume and high flow capacity.

RSK 7098810

Purus channel volume for expoxy is a floor channel made of acid-resistant stainless steel for installation in concrete. The floor channel is 600x400x100 mm with a mid outlet and is intended for epoxy flooring. The floor channel needs to be supplemented with grid depending on the environment and outlet house in acid-resistant stainless steel. Purus channel volume is adapted for

environments with requirements for hygiene, has a large volume and high flow capacity.

RSK 7098811

Purus channel volume for expoxy is a floor channel made of acid-resistant stainless steel for installation in concrete. The floor channel is 900x600x100 mm with a mid outlet and is intended for epoxy flooring. The floor channel needs to be supplemented with grid depending on the environment and outlet house in acid-resistant stainless steel. Purus channel volume is adapted for environments with requirements for hygiene, has a large volume and high flow capacity.

RSK 7098812

Purus channel volume for expoxy is a floor channel made of acid-resistant stainless steel for installation in concrete. The floor channel is 800x500x100 mm with a mid outlet and is intended for epoxy flooring. The floor channel needs to be supplemented with grid depending on the environment and outlet house in acid-resistant stainless steel. Purus channel volume is adapted for environments with requirements for hygiene, has a large volume and high flow capacity.

RSK 7098813

Purus channel volume for expoxy is a floor channel made of acid-resistant stainless steel for installation in concrete. The floor channel is 300x300x200 mm with a mid outlet and is intended for epoxy flooring. The floor channel needs to be supplemented

with grid depending on the environment and outlet house in acid-resistant stainless steel. Purus channel volume is adapted for environments with requirements for hygiene, has a large volume and high flow capacity.

RSK 7098814

Purus channel volume for epoxy is a floor channel made of acid-resistant stainless steel for installation in concrete. The floor channel is 500x300x200 mm with a mid outlet and is intended for epoxy flooring. The floor channel needs to be supplemented with grid depending on the environment and outlet house in acid-resistant stainless steel. Purus channel volume is adapted for environments with requirements for hygiene, has a large volume and high flow capacity.

RSK 7098815

Purus channel volume for epoxy is a floor channel made of acid-resistant stainless steel for installation in concrete. The floor channel is 800x500x200 mm with a mid outlet and is intended for epoxy flooring. The floor channel needs to be supplemented with grid depending on the environment and outlet house in acid-resistant stainless steel. Purus channel volume is adapted for environments with requirements for hygiene, has a large volume and high flow capacity.

RSK 7098816

Purus channel volume for epoxy is a floor channel made of acid-resistant stainless steel for installation in concrete. The floor

channel is 1000x300x50 mm with a mid outlet and is intended for epoxy flooring. The floor channel needs to be supplemented with grid depending on the environment and outlet house in acid-resistant stainless steel. Purus channel volume is adapted for environments with requirements for hygiene, has a large volume and high flow capacity.

RSK 7098817

Purus channel volume for epoxy is a floor channel made of acid-resistant stainless steel for installation in concrete. The floor channel is 1200x600x100 mm with a mid outlet and is intended for epoxy flooring. The floor channel needs to be supplemented with grid depending on the environment and outlet house in acid-resistant stainless steel. Purus channel volume is adapted for environments with requirements for hygiene, has a large volume and high flow capacity.

RSK 7103075

Purus channel volume for epoxy is a floor channel made of acid-resistant stainless steel for installation in concrete. The floor channel is 900x600x200 mm with a mid outlet and is intended for epoxy flooring. The floor channel needs to be supplemented with grid depending on the environment and outlet house in acid-resistant stainless steel. Purus channel volume is adapted for environments with requirements for hygiene, has a large volume and high flow capacity.

RSK Number	7098808
Electrical Data	7 l
Floor Construction	Concrete flooring
Floor Covering	Resin
Function	Central outlet
Item Color	Stainless
Material	Acid-resistant stainless steel 1.4404
Outlet Dimension	Side/bottom in stainless steel in Ø75/Ø110 mm
Size	500x300x50 mm
Surface	Pickled
Version	Do not forget grid/outlet house

RSK Number	7098809
Electrical Data	15 l
Floor Construction	Concrete flooring
Floor Covering	Resin
Function	Central outlet
Item Color	Stainless
Material	Acid-resistant stainless steel 1.4404
Outlet Dimension	Side/bottom in stainless steel in

Ø75/Ø110 mm

Size	400x400x100 mm
Surface	Pickled
Version	Do not forget grid/outlet house
RSK Number	7098810
Electrical Data	23 l
Floor Construction	Concrete flooring
Floor Covering	Resin
Function	Central outlet
Item Color	Stainless
Material	Acid-resistant stainless steel 1.4404
Outlet Dimension	Side/bottom in stainless steel in Ø75/Ø110 mm
Size	600x400x100 mm
Surface	Pickled
Version	Do not forget grid/outlet house
RSK Number	7098811
Electrical Data	51 l
Floor Construction	Concrete flooring

Floor Covering	Resin
Function	Central outlet
Item Color	Stainless
Material	Acid-resistant stainless steel 1.4404
Outlet Dimension	Side/bottom in stainless steel in Ø75/Ø110 mm
Size	900x600x100 mm
Surface	Pickled
Version	Do not forget grid/outlet house
RSK Number	7098812
Electrical Data	38 l
Floor Construction	Concrete flooring
Floor Covering	Resin
Function	Central outlet
Item Color	Stainless
Material	Acid-resistant stainless steel 1.4404
Outlet Dimension	Side/bottom in stainless steel in Ø75/Ø110 mm
Size	800x500x100 mm
Surface	Pickled
Version	Do not forget grid/outlet house

RSK Number	7098813
Floor Construction	Concrete flooring
Floor Covering	Resin
Function	Central outlet
Item Color	Stainless
Material	Acid-resistant stainless steel 1.4404
Outlet Dimension	Side/bottom in stainless steel in Ø75/Ø110 mm
Size	300x300x200 mm
Surface	Pickled
Version	Do not forget grid/outlet house

RSK Number	7098814
Floor Construction	Concrete flooring
Floor Covering	Resin
Function	Central outlet
Item Color	Stainless
Material	Acid-resistant stainless steel 1.4404
Outlet Dimension	Side/bottom in stainless steel in Ø75/Ø110 mm
Size	500x300x200 mm

Surface	Pickled
Version	Do not forget grid/outlet house
RSK Number	7098815
Floor Construction	Concrete flooring
Floor Covering	Resin
Function	Central outlet
Item Color	Stainless
Material	Acid-resistant stainless steel 1.4404
Outlet Dimension	Side/bottom in stainless steel in Ø75/Ø110 mm
Size	800x500x200 mm
Surface	Pickled
Version	Do not forget grid/outlet house
RSK Number	7098816
Floor Construction	Concrete flooring
Floor Covering	Resin
Function	Central outlet
Item Color	Stainless
Material	Acid-resistant stainless steel 1.4404

Outlet Dimension	Side/bottom in stainless steel in Ø75/Ø110 mm
Size	1000x300x50 mm
Surface	Pickled
Version	Do not forget grid/outlet house
RSK Number	7098817
Floor Construction	Concrete flooring
Floor Covering	Resin
Function	Central outlet
Item Color	Stainless
Material	Acid-resistant stainless steel 1.4404
Outlet Dimension	Side/bottom in stainless steel in Ø75/Ø110 mm
Size	1200x600x100 mm
Surface	Pickled
Version	Do not forget grid/outlet house
RSK Number	7103075
Floor Construction	Concrete flooring
Floor Covering	Concrete
Function	Central outlet

Item Color	Stainless
Material	Acid-resistant stainless steel 1.4404
Outlet Dimension	Side/bottom in stainless steel in Ø75/Ø110 mm
Size	900x600x200 mm
Surface	Pickled
Version	Do not forget grid/outlet house

Dimension (mm)	LxWxH (mm)	Dimension (mm)	LxWxH (mm)
500x300x50	503 x 303 x 50	1200x600x100	1203 x 603 x 100
1000x300x50	1003 x 303 x 50	300x300x200	303 x 303 x 200
400x400x100	403 x 403 x 100	500x300x200	503 x 303 x 200
600x400x100	603 x 403 x 100	800x500x200	803 x 503 x 200
800x500x100	803 x 503 x 100		
900x600x100	903 x 603 x 100		
900x600x200	903 x 603 x 200		

