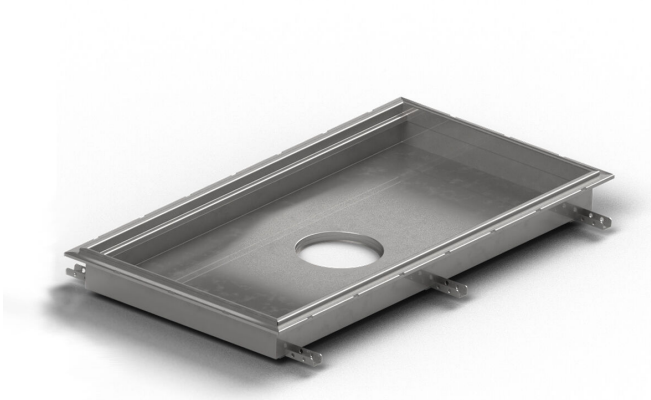


## RSK 7098799



Purus channel volume for tile floors with glue flange is a floor channel made of acid-resistant stainless steel for installation in concrete. The floor channel is 400x400x100 mm med ett mittplacerat utlopp och är avsedd för klinkergolv som ytskikt. The floor channel needs to be supplemented with grid depending on the environment and outlet house in acid-resistant stainless steel. Purus channel volume is adapted for environments with requirements for hygiene, has a large volume and high flow capacity.

## RSK 7098800

Purus channel volume for tile floors with glue flange is a floor channel made of acid-resistant stainless steel for installation in concrete. The floor channel is 600x400x100 mm med ett mittplacerat utlopp och är avsedd för klinkergolv som ytskikt. The floor channel needs to be supplemented with grid depending on the environment and outlet house in acid-resistant stainless steel. Purus channel volume is adapted for environments with requirements for hygiene, has a large volume and high flow capacity.

## RSK 7098801

Purus channel volume for tile floors with glue flange is a floor channel made of acid-resistant stainless steel for installation in concrete. The floor channel is 900x600x100 mm with a mid outlet and is intended for tiled flooring. The floor channel needs to be supplemented with grid depending on the environment and outlet house in acid-resistant stainless steel. Purus channel

volume is adapted for environments with requirements for hygiene, has a large volume and high flow capacity.

RSK 7098802

Purus channel volume for tile floors with glue flange is a floor channel made of acid-resistant stainless steel for installation in concrete. The floor channel is 800x500x100 mm with a mid outlet and is intended for tiled flooring. The floor channel needs to be supplemented with grid depending on the environment and outlet house in acid-resistant stainless steel. Purus channel volume is adapted for environments with requirements for hygiene, has a large volume and high flow capacity.

RSK 7098798

Purus channel volume for tile floors with glue flange is a floor channel made of acid-resistant stainless steel for installation in concrete. The floor channel is 500x300x50 mm with a mid outlet and is intended for tiled flooring. The floor channel needs to be supplemented with grid depending on the environment and outlet house in acid-resistant stainless steel. Purus channel volume is adapted for environments with requirements for hygiene, has a large volume and high flow capacity.

RSK 7098803

Purus channel volume for tile floors with glue flange is a floor channel made of acid-resistant stainless steel for installation in concrete. The floor channel is 300x300x200 mm with a mid outlet and is intended for tiled flooring. The floor channel needs to be

supplemented with grid depending on the environment and outlet house in acid-resistant stainless steel. Purus channel volume is adapted for environments with requirements for hygiene, has a large volume and high flow capacity.

RSK 7098804

Purus channel volume for tile floors with glue flange is a floor channel made of acid-resistant stainless steel for installation in concrete. The floor channel is 500x300x200 mm with a mid outlet and is intended for tiled flooring. The floor channel needs to be supplemented with grid depending on the environment and outlet house in acid-resistant stainless steel. Purus channel volume is adapted for environments with requirements for hygiene, has a large volume and high flow capacity.

RSK 7098805

Purus channel volume for tile floors with glue flange is a floor channel made of acid-resistant stainless steel for installation in concrete. The floor channel is 800x500x200 mm with a mid outlet and is intended for tiled flooring. The floor channel needs to be supplemented with grid depending on the environment and outlet house in acid-resistant stainless steel. Purus channel volume is adapted for environments with requirements for hygiene, has a large volume and high flow capacity.

RSK 7098806

Purus channel volume for tile floors with glue flange is a floor channel made of acid-resistant stainless steel for installation in

concrete. The floor channel is 1000x300x50 mm with a mid outlet and is intended for tiled flooring. The floor channel needs to be supplemented with grid depending on the environment and outlet house in acid-resistant stainless steel. Purus channel volume is adapted for environments with requirements for hygiene, has a large volume and high flow capacity.

RSK 7098807

Purus channel volume for tile floors with glue flange is a floor channel made of acid-resistant stainless steel for installation in concrete. The floor channel is 1200x600x100 mm with a mid outlet and is intended for tiled flooring. The floor channel needs to be supplemented with grid depending on the environment and outlet house in acid-resistant stainless steel. Purus channel volume is adapted for environments with requirements for hygiene, has a large volume and high flow capacity.

RSK 7103076

Purus channel volume for tile floors with glue flange is a floor channel made of acid-resistant stainless steel for installation in concrete. The floor channel is 900x600x200 mm with a mid outlet and is intended for tiled flooring. The floor channel needs to be supplemented with grid depending on the environment and outlet house in acid-resistant stainless steel. Purus channel volume is adapted for environments with requirements for hygiene, has a large volume and high flow capacity.

<b>RSK Number</b>	7098799
<b>Electrical Data</b>	15 l
<b>Floor Construction</b>	Concrete flooring
<b>Floor Covering</b>	Tile floor with glueing flange
<b>Function</b>	Central outlet
<b>Item Color</b>	Stainless
<b>Material</b>	Acid-resistant stainless steel 1.4404
<b>Outlet Dimension</b>	Side/bottom in stainless steel in Ø75/Ø110 mm
<b>Size</b>	400x400x100 mm
<b>Surface</b>	Pickled
<b>Version</b>	Do not forget grid/outlet house

<b>RSK Number</b>	7098800
<b>Electrical Data</b>	23 l
<b>Floor Construction</b>	Concrete flooring
<b>Floor Covering</b>	Tile floor with glueing flange
<b>Function</b>	Central outlet
<b>Item Color</b>	Stainless
<b>Material</b>	Acid-resistant stainless steel 1.4404
<b>Outlet Dimension</b>	Side/bottom in stainless steel in

Ø75/Ø110 mm

<b>Size</b>	600x400x100 mm
<b>Surface</b>	Pickled
<b>Version</b>	Do not forget grid/outlet house
<b>RSK Number</b>	7098801
<b>Electrical Data</b>	51 l
<b>Floor Construction</b>	Concrete flooring
<b>Floor Covering</b>	Tile floor with glueing flange
<b>Function</b>	Central outlet
<b>Item Color</b>	Stainless
<b>Material</b>	Acid-resistant stainless steel 1.4404
<b>Outlet Dimension</b>	Side/bottom in stainless steel in Ø75/Ø110 mm
<b>Size</b>	900x600x100 mm
<b>Surface</b>	Pickled
<b>Version</b>	Do not forget grid/outlet house
<b>RSK Number</b>	7098802
<b>Electrical Data</b>	38 l
<b>Floor Construction</b>	Concrete flooring

<b>Floor Covering</b>	Tile floor with glueing flange
<b>Function</b>	Central outlet
<b>Item Color</b>	Stainless
<b>Material</b>	Acid-resistant stainless steel 1.4404
<b>Outlet Dimension</b>	Side/bottom in stainless steel in Ø75/Ø110 mm
<b>Size</b>	800x500x100 mm
<b>Surface</b>	Pickled
<b>Version</b>	Do not forget grid/outlet house
<b>RSK Number</b>	7098798
<b>Floor Construction</b>	Concrete flooring
<b>Floor Covering</b>	Tile floor with glueing flange
<b>Function</b>	Central outlet
<b>Item Color</b>	Stainless
<b>Material</b>	Acid-resistant stainless steel 1.4404
<b>Outlet Dimension</b>	Side/bottom in stainless steel in Ø75/Ø110 mm
<b>Size</b>	500x300x50 mm
<b>Surface</b>	Pickled
<b>Version</b>	Do not forget grid/outlet house

<b>RSK Number</b>	7098803
<b>Floor Construction</b>	Concrete flooring
<b>Floor Covering</b>	Tile floor with glueing flange
<b>Function</b>	Central outlet
<b>Item Color</b>	Stainless
<b>Material</b>	Acid-resistant stainless steel 1.4404
<b>Outlet Dimension</b>	Side/bottom in stainless steel in Ø75/Ø110 mm
<b>Size</b>	300x300x200 mm
<b>Surface</b>	Pickled
<b>Version</b>	Do not forget grid/outlet house

<b>RSK Number</b>	7098804
<b>Floor Construction</b>	Concrete flooring
<b>Floor Covering</b>	Tile floor with glueing flange
<b>Function</b>	Central outlet
<b>Item Color</b>	Stainless
<b>Material</b>	Acid-resistant stainless steel 1.4404
<b>Outlet Dimension</b>	Side/bottom in stainless steel in Ø75/Ø110 mm
<b>Size</b>	500x300x200 mm



<b>Surface</b>	Pickled
<b>Version</b>	Do not forget grid/outlet house
<b>RSK Number</b>	7098805
<b>Floor Construction</b>	Concrete flooring
<b>Floor Covering</b>	Tile floor with glueing flange
<b>Function</b>	Central outlet
<b>Item Color</b>	Stainless
<b>Material</b>	Acid-resistant stainless steel 1.4404
<b>Outlet Dimension</b>	Side/bottom in stainless steel in Ø75/Ø110 mm
<b>Size</b>	800x500x200 mm
<b>Surface</b>	Pickled
<b>Version</b>	Do not forget grid/outlet house
<b>RSK Number</b>	7098806
<b>Floor Construction</b>	Concrete flooring
<b>Floor Covering</b>	Tile floor with glueing flange
<b>Function</b>	Central outlet
<b>Item Color</b>	Stainless
<b>Material</b>	Acid-resistant stainless steel 1.4404

<b>Outlet Dimension</b>	Side/bottom in stainless steel in Ø75/Ø110 mm
<b>Size</b>	1000x300x50 mm
<b>Surface</b>	Pickled
<b>Version</b>	Do not forget grid/outlet house
<b>RSK Number</b>	7098807
<b>Floor Construction</b>	Concrete flooring
<b>Floor Covering</b>	Tile floor with glueing flange
<b>Function</b>	Central outlet
<b>Item Color</b>	Stainless
<b>Material</b>	Acid-resistant stainless steel 1.4404
<b>Outlet Dimension</b>	Side/bottom in stainless steel in Ø75/Ø110 mm
<b>Size</b>	1200x600x100 mm
<b>Surface</b>	Pickled
<b>Version</b>	Do not forget grid/outlet house
<b>RSK Number</b>	7103076
<b>Floor Construction</b>	Concrete flooring
<b>Floor Covering</b>	Concrete
<b>Function</b>	Central outlet

<b>Item Color</b>	Stainless
<b>Material</b>	Acid-resistant stainless steel 1.4404
<b>Outlet Dimension</b>	Side/bottom in stainless steel in Ø75/Ø110 mm
<b>Size</b>	900x600x200 mm
<b>Surface</b>	Pickled
<b>Version</b>	Do not forget grid/outlet house

Dimension (mm)	LxWxH (mm)	Dimension (mm)	LxWxH (mm)
500x300x50	503 x 303 x 50	1200x600x100	1203 x 603 x 100
1000x300x50	1003 x 303 x 50	300x300x200	303 x 303 x 200
400x400x100	403 x 403 x 100	500x300x200	503 x 303 x 200
600x400x100	603 x 403 x 100	800x500x200	803 x 503 x 200
800x500x100	803 x 503 x 100		
900x600x100	903 x 603 x 100		
900x600x200	903 x 603 x 200		

