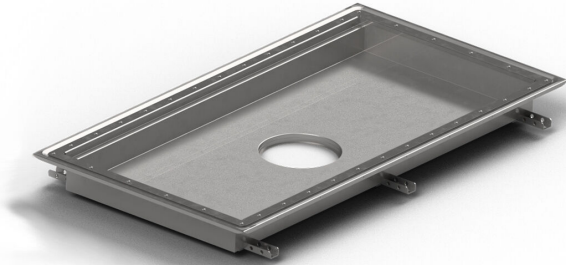


## RSK 7098788

Purus channel volume for vinyl is a floor channel made of acid-resistant stainless steel for installation in concrete. The floor channel is 400x400x100 mm with a mid outlet and is intended for vinyl flooring. The floor channel needs to be supplemented with grid depending on the environment and outlet house in acid-resistant stainless steel. Purus channel volume is adapted for environments with requirements for hygiene, has a large volume and high flow capacity.



## RSK 7098789

Purus channel volume for vinyl is a floor channel made of acid-resistant stainless steel for installation in concrete. The floor channel is 600x400x100 mm with a mid outlet and is intended for vinyl flooring.. The floor channel needs to be supplemented with grid depending on the environment and outlet house in acid-resistant stainless steel. Purus channel volume is adapted for environments with requirements for hygiene, has a large volume and high flow capacity.

## RSK 7098790

Purus channel volume for vinyl is a floor channel made of acid-resistant stainless steel for installation in concrete. The floor channel is 900x600x100 mm med ett mittplacerat utlopp och är avsedd för plasmatta som ytskikt. The floor channel needs to be supplemented with grid depending on the environment and outlet house in acid-resistant stainless steel. Purus

channel volume is adapted for environments with requirements for hygiene, has a large volume and high flow capacity.

#### RSK 7098791

Purus channel volume for vinyl is a floor channel made of acid-resistant stainless steel for installation in concrete. The floor channel is 800x500x100 mm with a mid outlet and is intended for vinyl flooring. The floor channel needs to be supplemented with grid depending on the environment and outlet house in acid-resistant stainless steel. Purus channel volume is adapted for environments with requirements for hygiene, has a large volume and high flow capacity.

#### RSK 7098792

Purus channel volume for vinyl is a floor channel made of acid-resistant stainless steel for installation in concrete. The floor channel is 1200x600x100 mm med ett mittplacerat utlopp och är avsedd för plastmatta som ytskikt. The floor channel needs to be supplemented with grid depending on the environment and outlet house in acid-resistant stainless steel. Purus channel volume is adapted for environments with requirements for hygiene, has a large volume and high flow capacity.

#### RSK 7098793

Purus channel volume for vinyl is a floor channel made of acid-resistant stainless steel for installation in concrete. The floor channel is 500x300x50 mm med ett mittplacerat utlopp och är avsedd för plastmatta som ytskikt. The floor channel

needs to be supplemented with grid depending on the environment and outlet house in acid-resistant stainless steel. Purus channel volume is adapted for environments with requirements for hygiene, has a large volume and high flow capacity.

#### RSK 7098794

Purus channel volume for vinyl is a floor channel made of acid-resistant stainless steel for installation in concrete. The floor channel is 1000x300x50 mm with a mid outlet and is intended for vinyl flooring. The floor channel needs to be supplemented with grid depending on the environment and outlet house in acid-resistant stainless steel. Purus channel volume is adapted for environments with requirements for hygiene, has a large volume and high flow capacity.

#### RSK 7098795

Purus channel volume for vinyl is a floor channel made of acid-resistant stainless steel for installation in concrete. The floor channel is 300x300x200 mm med ett mittplacerat utlopp och är avsedd för plastmatta som ytskikt. The floor channel needs to be supplemented with grid depending on the environment and outlet house in acid-resistant stainless steel. Purus channel volume is adapted for environments with requirements for hygiene, has a large volume and high flow capacity.

#### RSK 7098796

Purus channel volume for vinyl is a floor channel made of acid-resistant stainless steel for installation in concrete. The floor

channel is 500x300x200 mm with a mid outlet and is intended for vinyl flooring. The floor channel needs to be supplemented with grid depending on the environment and outlet house in acid-resistant stainless steel. Purus channel volume is adapted for environments with requirements for hygiene, has a large volume and high flow capacity.

**RSK 7098797**

Purus channel volume for vinyl is a floor channel made of acid-resistant stainless steel for installation in concrete. The floor channel is 800x500x200 mm with a mid outlet and is intended for vinyl flooring. The floor channel needs to be supplemented with grid depending on the environment and outlet house in acid-resistant stainless steel. Purus channel volume is adapted for environments with requirements for hygiene, has a large volume and high flow capacity.

**RSK 7103077**

Purus channel volume for vinyl is a floor channel made of acid-resistant stainless steel for installation in concrete. The floor channel is 900x600x200 mm med ett mittplacerat utlopp och är avsedd för plastmatta som ytskikt. The floor channel needs to be supplemented with grid depending on the environment and outlet house in acid-resistant stainless steel. Purus channel volume is adapted for environments with requirements for hygiene, has a large volume and high flow capacity.

Purus channel volume for vinyl is a floor channel made of acid-resistant stainless steel for installation in concrete. The floor channel is 400x400x100 mm with a mid outlet and is intended for vinyl flooring. The floor channel needs to be supplemented with grid depending on the environment and outlet house in acid-resistant stainless steel. Purus channel volume is adapted for environments with requirements for hygiene, has a large volume and high flow capacity.

<b>RSK Number</b>	7098788
<b>Dimension</b>	Side/bottom in stainless steel in Ø75/Ø110 mm
<b>Electrical Data</b>	15 l
<b>Floor Construction</b>	Concrete flooring
<b>Floor Covering</b>	Vinyl
<b>Function</b>	Central outlet
<b>Item Color</b>	Stainless
<b>Material</b>	Acid-resistant stainless steel 1.4404
<b>Size</b>	400x400x100 mm
<b>Surface</b>	Pickled
<b>Version</b>	Do not forget grid/outlet house
<b>RSK Number</b>	7098789
<b>Dimension</b>	Side/bottom in stainless steel in Ø75/Ø110 mm
<b>Electrical Data</b>	23 l
<b>Floor Construction</b>	Concrete flooring

<b>Floor Covering</b>	Vinyl
<b>Function</b>	Central outlet
<b>Item Color</b>	Stainless
<b>Material</b>	Acid-resistant stainless steel 1.4404
<b>Size</b>	600x400x100 mm
<b>Surface</b>	Pickled
<b>Version</b>	Do not forget grid/outlet house
<b>RSK Number</b>	7098790
<b>Dimension</b>	Side/bottom in stainless steel in Ø75/Ø110 mm
<b>Electrical Data</b>	51 l
<b>Floor Construction</b>	Concrete flooring
<b>Floor Covering</b>	Vinyl
<b>Function</b>	Central outlet
<b>Item Color</b>	Stainless
<b>Material</b>	Acid-resistant stainless steel 1.4404
<b>Size</b>	900x600x100 mm
<b>Surface</b>	Pickled
<b>Version</b>	Do not forget grid/outlet house
<b>RSK Number</b>	7098791

<b>Dimension</b>	Side/bottom in stainless steel in Ø75/Ø110 mm
<b>Electrical Data</b>	38 l
<b>Floor Construction</b>	Concrete flooring
<b>Floor Covering</b>	Vinyl
<b>Function</b>	Central outlet
<b>Item Color</b>	Stainless
<b>Material</b>	Acid-resistant stainless steel 1.4404
<b>Size</b>	800x500x100 mm
<b>Surface</b>	Pickled
<b>Version</b>	Do not forget grid/outlet house
<b>RSK Number</b>	7098792
<b>Dimension</b>	Side/bottom in stainless steel in Ø75/Ø110 mm
<b>Floor Construction</b>	Concrete flooring
<b>Floor Covering</b>	Vinyl
<b>Function</b>	Central outlet
<b>Item Color</b>	Stainless
<b>Material</b>	Acid-resistant stainless steel 1.4404
<b>Size</b>	1200x600x100 mm

<b>Surface</b>	Pickled
<b>Version</b>	Do not forget grid/outlet house
<b>RSK Number</b>	7098793
<b>Dimension</b>	Side/bottom in stainless steel in Ø75/Ø110 mm
<b>Floor Construction</b>	Concrete flooring
<b>Floor Covering</b>	Vinyl
<b>Function</b>	Central outlet
<b>Item Color</b>	Stainless
<b>Material</b>	Acid-resistant stainless steel 1.4404
<b>Size</b>	500x300x50 mm
<b>Surface</b>	Pickled
<b>Version</b>	Do not forget grid/outlet house
<b>RSK Number</b>	7098794
<b>Dimension</b>	Side/bottom in stainless steel in Ø75/Ø110 mm
<b>Floor Construction</b>	Concrete flooring
<b>Floor Covering</b>	Vinyl
<b>Function</b>	Central outlet
<b>Item Color</b>	Stainless

<b>Material</b>	Acid-resistant stainless steel 1.4404
<b>Size</b>	1000x300x50 mm
<b>Surface</b>	Pickled
<b>Version</b>	Do not forget grid/outlet house

<b>RSK Number</b>	7098795
<b>Dimension</b>	Side/bottom in stainless steel in Ø75/Ø110 mm

<b>Floor Construction</b>	Concrete flooring
---------------------------	-------------------

<b>Floor Covering</b>	Vinyl
-----------------------	-------

<b>Function</b>	Central outlet
-----------------	----------------

<b>Item Color</b>	Stainless
-------------------	-----------

<b>Material</b>	Acid-resistant stainless steel 1.4404
<b>Size</b>	300x300x200 mm
<b>Surface</b>	Pickled
<b>Version</b>	Do not forget grid/outlet house

<b>RSK Number</b>	7098796
<b>Dimension</b>	Side/bottom in stainless steel in Ø75/Ø110 mm

<b>Floor Construction</b>	Concrete flooring
---------------------------	-------------------

<b>Floor Covering</b>	Vinyl
-----------------------	-------

<b>Function</b>	Central outlet
<b>Item Color</b>	Stainless
<b>Material</b>	Acid-resistant stainless steel 1.4404
<b>Size</b>	500x300x200 mm
<b>Surface</b>	Pickled
<b>Version</b>	Do not forget grid/outlet house
<b>RSK Number</b>	7098797
<b>Dimension</b>	Side/bottom in stainless steel in Ø75/Ø110 mm
<b>Floor Construction</b>	Concrete flooring
<b>Floor Covering</b>	Vinyl
<b>Function</b>	Central outlet
<b>Item Color</b>	Stainless
<b>Material</b>	Acid-resistant stainless steel 1.4404
<b>Size</b>	800x500x200 mm
<b>Surface</b>	Pickled
<b>Version</b>	Do not forget grid/outlet house
<b>RSK Number</b>	7103077
<b>Dimension</b>	Side/bottom in stainless steel in Ø75/Ø110 mm

<b>Floor Construction</b>	Concrete flooring
<b>Floor Covering</b>	Concrete
<b>Function</b>	Central outlet
<b>Item Color</b>	Stainless
<b>Material</b>	Acid-resistant stainless steel 1.4404
<b>Size</b>	900x600x200 mm
<b>Surface</b>	Pickled
<b>Version</b>	Do not forget grid/outlet house