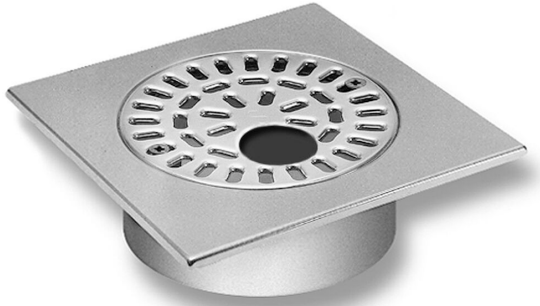


## RSK 7133798



The 300x300mm stainless steel grate for tiled floors has a height of 50mm and a K3 load class (300kg), and a 50mm inlet hole. It comes with a locking device for securing to the floor. The grate consists of a square frame with a circular grate within, which can be removed for cleaning and maintenance. It is designed to fit most of Purus' floor drains with a grate diameter of 220mm.

## Specifications

The 300x300mm stainless steel grate for tiled floors has a height of 50mm and a K3 load class (300kg), and a 50mm inlet hole. It comes with a locking device for securing to the floor. The grate consists of a square frame with a circular grate within, which can be removed for cleaning and maintenance. It is designed to fit most of Purus' floor drains with a grate diameter of 220mm.

<b>RSK Number</b>	7133798
<b>Dimension</b>	Ø40 mm
<b>Floor Covering</b>	Tiles
<b>Function</b>	With locking device
<b>Item Color</b>	Stainless
<b>Material</b>	Acid-resistant stainless steel 1.4404
<b>Pressure Flow Temp</b>	K3

**Size**

300x300x50 mm

**Surface**

Electropolished

**Version**

With stainless steel grating